



Farnborough College  
of Technology

SCHOOL LEAVERS COURSE GUIDE

**2023/2024**

SUMIKA - FORMER PUBLIC SERVICES LEARNER - NOW TRAINING TO BE A SPECIAL CONSTABLE



MAKE YOURSELF

**START**



RATED GRADE 1  
OUTSTANDING

**T-LEVELS**  
THE NEXT LEVEL QUALIFICATION

PROGRESSION TO DEGREES  
AND APPRENTICESHIPS



## SUCCESS IN THE MAKING

# SUMIKA

## PUBLIC SERVICES

NOW AT UNIVERSITY OF WINCHESTER  
STUDYING PROFESSIONAL POLICING

"My teachers were really helpful and one was an acting constable. I got lots of information from him about the different roles available, which helped me to figure out what I wanted to go into. I now work as a Special Constable alongside my degree which works really well."





A young woman with long dark hair and glasses, wearing a bright green puffer jacket and blue jeans, stands with her arms crossed in front of a white police car. The car has blue and yellow markings and the text 'police.uk' and 'POLICE' visible. The background shows green foliage and a building.

**"MY KNOWLEDGE FROM  
FARNBOROUGH HAS GIVEN ME A  
GREAT START TO MY DEGREE – I EVEN  
USE WHAT I LEARNED AT COLLEGE  
WHEN I'M OUT ON DUTY."**

# TAKE A LOOK FOR YOURSELF

**DISCOVER LIFE AFTER SCHOOL, GREAT QUALIFICATIONS AND YOUR FUTURE CAREER AT AN OPEN EVENT.**

## OPEN EVENTS AT FARNBOROUGH

**WEDNESDAY 12 OCTOBER 2022**

4 - 7.30PM

**THURSDAY 13 OCTOBER 2022**

4 - 7.30PM

**WEDNESDAY 23 NOVEMBER 2022**

4 - 7.30PM

**WEDNESDAY 8 FEBRUARY 2023**

4-7.30PM

## OPEN EVENTS AT ALDERSHOT FOR CONSTRUCTION COURSES

**THURSDAY 20 OCTOBER 2022**

4-7.30PM

**TUESDAY 22 NOVEMBER 2022**

4-7.30PM

**THURSDAY 9 FEBRUARY 2023**

4-7.30PM



REGISTER ONLINE AT

**[WWW.FARN-CT.AC.UK/EVENTS](http://WWW.FARN-CT.AC.UK/EVENTS)**



# PRINCIPAL'S WELCOME

## THANK YOU FOR TAKING AN INTEREST IN OUR OUTSTANDING COLLEGE.

It's no secret that we're immensely proud of our learners' achievements and our role in creating skilled, confident and enterprising young adults.

Those joining us in 2023 will be excited to know they'll have access to our new Emerging Technologies Centre and various refurbished facilities across the College – all designed to give you a head-start on the careers of the future. We're here to empower all of our future learners by offering excellent training and support, as well as the confidence to pursue a rewarding career or further study.

With an Outstanding Ofsted validation, you can feel at ease putting your future in our experienced hands. I hope to meet you at an upcoming Open Event and that you'll feel inspired by the range of creative, academic, technical and enterprising courses we have to offer.



**PRINCIPAL  
CEO**

**VIRGINIA  
BARRETT**

## CONTENTS

OPEN EVENTS	4
PRINCIPAL'S WELCOME	5
HOW TO APPLY	6
EIGHT HABITS	8
CHOOSING YOUR COURSE	10
ENTRY REQUIREMENTS	12
MIX AND MATCH	13
APPRENTICESHIPS	14
T-LEVELS	15
PERSONAL DEVELOPMENT	20
OUR LATEST INVESTMENTS	24
INNOVATIVE FACILITIES	26
ALDERSHOT COLLEGE	30
UNIVERSITY CENTRE FARNBOROUGH	32
SUPPORTING YOU	36
CAREERS FOCUS	38
COURSES	42-119
TRAVELLING TO COLLEGE	120
OTHER INFORMATION	121
ADULT EDUCATION	123

## COURSES

A LEVELS	42
ACCOUNTING, BUSINESS AND TRAVEL & TOURISM	48
CARE SERVICES AND EDUCATION	54
CATERING	60
CONSTRUCTION	64
CREATIVE STUDIES	70
DIGITAL (IT)	76
ENGINEERING AND MOTOR VEHICLE MAINTENANCE	80
ESPORTS AND GAMES	86
ENGLISH FOR SPEAKERS OF OTHER LANGUAGES	90
FLORISTRY AND HORTICULTURE	92
FOUNDATION AND ENTRY LEVEL STUDIES	96
HAIR AND BEAUTY	100
MEDIA, BROADCAST AND PRODUCTION	104
MUSIC AND PERFORMING ARTS	108
SCIENCE AND CRIMINOLOGY	112
SPORT AND PROTECTIVE SERVICES	116

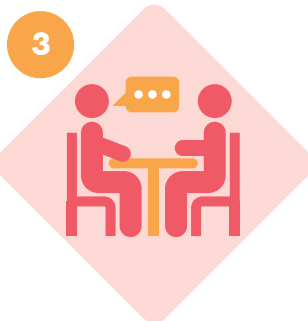
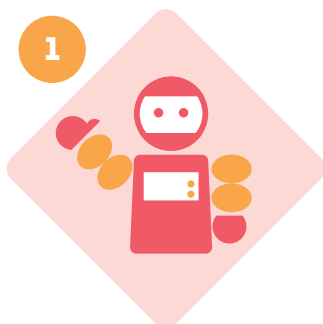
# HOW TO APPLY

**APPLYING TO STUDY WITH US TAKES JUST A FEW SIMPLE STEPS AND WE'RE ALWAYS AVAILABLE IF YOU HAVE ANY QUESTIONS.**



## 1. EXPLORE YOUR OPTIONS

Open Events are one of the best ways to discover our courses. Think about which subjects you enjoy at school and jobs you might like to do in the future.



## 3. ATTEND A SHORT INTERVIEW

We'll get in touch to arrange an interview, so keep an eye on your email inbox (and junk folder) for an invitation. This is to make sure the course you've chosen puts you on the right path for your goals.



## 2. MAKE AN APPLICATION

Head to [farn-ct.ac.uk](http://farn-ct.ac.uk) to browse courses and find the subjects you'd like to apply for. Follow the links to apply and around 15 minutes later you'll be ready to submit your application.



## 4. ACCEPT YOUR OFFER

You'll receive an offer by email based on you achieving the entry requirements for your chosen course. Reply to let us know your decision and secure your place.

## 5. ATTEND SUMMER COLLEGE

Before the summer holidays you'll be invited to attend an introductory day at the College. It's a great chance to meet your new teachers and classmates before joining.



## 6. ENROL AT A JOINING DAY

This is where your college journey begins. Your Joining Day will involve showing us your GCSE results, enrolling on your course, and officially joining our outstanding college!



**SUCCESS IN THE MAKING****ETHAN****PERFORMING ARTS**

PREPARING FOR DRAMA SCHOOL TO  
SPECIALISE IN MUSICAL THEATRE

"My class felt quite big, but I found myself making friends with people I wouldn't have met otherwise – it's a real mix of people that I can bond with. The teachers definitely gave me the freedom to make my assignments my own, so I can do more of what I love. They've supported me with my personal life and make us all feel like we're in a safe place when we're performing."

**"THE FREEDOM OF THE  
COURSE MEANS THAT  
YOU GET TO DO LOTS  
OF WHAT YOU ENJOY  
AND EXPRESS YOURSELF  
IN DIFFERENT WAYS."**

# 8 HABITS OF HIGHLY EFFECTIVE STUDENTS

**FOLLOW IN THE FOOTSTEPS OF LEARNERS  
WHO'VE SECURED FANTASTIC RESULTS AND  
REWARDING CAREERS WITH OUR SUPPORT.**

There's no secret formula for success, but when you join us we will be encouraging you to adopt these eight positive habits. We believe these will drive you to get the most out of your time studying with us and keep you on-track while working towards your goals:



**CHRIS**

Level 3 Graphic Design

"I'm enjoying doing my final major project as it's an opportunity to focus on what you're interested in and want to work towards."



**SUCCESS IN THE MAKING****WALID****BRICKLAYING**

NOW A SELF-EMPLOYED BRICKLAYER

"I've been working in the construction industry for four years now as a bricklayer. It's good money, it's fun – what else could you want!"

**"IT'S GOOD MONEY,  
IT'S FUN – WHAT ELSE  
COULD YOU WANT!"**

# CHOOSING YOUR COURSE

**AT FARNBOROUGH, YOU'LL HAVE THE  
EXCITING OPPORTUNITY TO CHOOSE  
THE SUBJECTS YOU ENJOY MOST AND  
A COURSE THAT SUITS YOUR STYLE  
OF LEARNING.**

◀ MORE CLASSROOM BASED

MORE WORK BASED ▶

## A LEVELS

- Study three subjects in-depth, with subjects grouped into pathways that have been tailored for progression into specific subject areas at university and careers.
- Taught in a similar way to school with mostly classroom-based lessons
- Can lead to university-level study

## BTEC AND VOCATIONAL PROGRAMMES

- Focuses on one subject to provide skills for a specific industry
- Involves more hands-on study and practical assessments
- Can lead directly to employment, apprenticeships or university-level study (with a level 3 qualification)

## T LEVELS

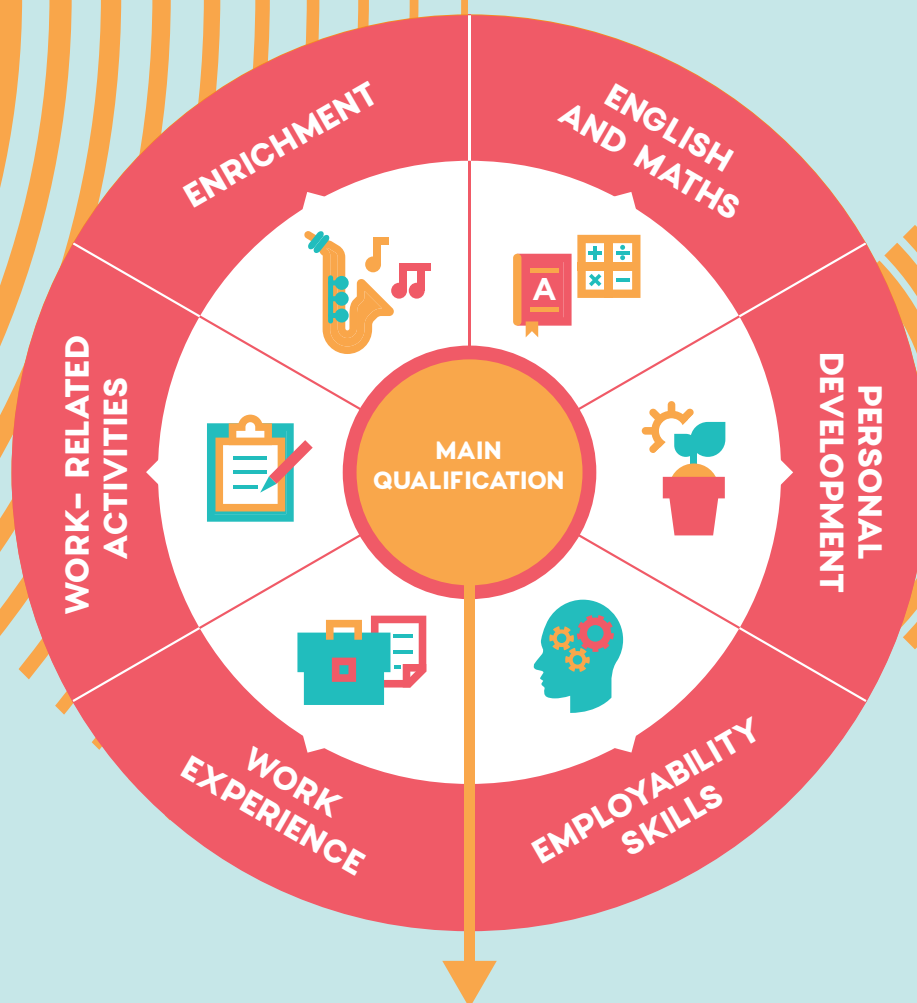
- Prepares you for a specific career, with hands-on practical skills and a chance to specialise in an area of your choice
- Taught 80% in the classroom and 20% in the workplace to provide sought-after experience and put your skills into action
- Can lead directly to employment, apprenticeships or university-level study

## APPRENTICESHIPS

- Combines study with paid work – earn while you learn and start your career faster
- Trains you for a specific profession through on-the-job experience
- Can study up to degree level



# YOUR COURSE'S FRAMEWORK



## CAN LEAD YOU TO:

- GETTING A JOB IN AN INDUSTRY YOU LOVE
- APPLYING TO UNIVERSITY - AFTER STUDYING A LEVEL 3, A LEVEL, OR T LEVEL PROGRAMME
- BEGINNING AN APPRENTICESHIP
- PROGRESSING TO A MORE ADVANCED PROGRAMME
- DISCOVERING YOUR HIDDEN TALENTS

# ENTRY REQUIREMENTS

WHICHEVER LEVEL YOU JOIN AT,  
THERE IS ALMOST ALWAYS ANOTHER  
COURSE, APPRENTICESHIP OR  
UNIVERSITY-LEVEL COURSE YOU CAN  
WORK TOWARDS.

Find the course level that’s right for your predicted GCSE grades:

COURSE LEVEL	COURSES AVAILABLE	TYPICAL ENTRY REQUIREMENTS*
Level 3 Progress to university/ careers	A Levels, T Levels, BTECs, Vocational Courses, Apprenticeships	At least five GCSEs at grade 4 or above (to include English and/or maths depending on the subject)
Level 2 Progress to level 3 or employment	T Level Transition Courses, BTECs, Vocational Courses, Apprenticeships	GCSEs at grade 3 or above
Level 1 Progress to level 2	BTECs, Vocational Courses, Traineeships	GCSEs at grade 2-1 or above
Entry Level Progress to level 1	Pathways to Independence, Vocational Introduction to College, Focus on Life Skills, Supported Internships	No formal qualifications



**MYLA**  
Game Development

“Studying here has allowed me to get involved with my fellow peers through being a student rep, ambassador and digital ambassador.”

\* Entry requirements may vary by subject and additional requirements may apply. Visit our website for full details.



# BEST OF BOTH WORLDS

**LOOKING TO KEEP YOUR OPTIONS OPEN FOR THE FUTURE? MIX AND MATCH A BTEC OR T LEVEL WITH ACADEMIC A LEVELS.**

We give you the flexibility to study a personalised mix of a Level 3 BTEC or T Level with A Levels. This combination gives you the chance to develop more of your creative, technical, research, and analytical skills.

Remember, it's important to choose your courses based on your long-term goals. If you're looking to study at university, they'll want to see combinations that both prepare you for their course and a career beyond your time in education. We'll talk you through your choices and make sure you are on the right path for your goals when you attend a college interview.

## FIVE REASONS TO MIX AND MATCH!

- 1 Learn a wide range of both academic and vocational skills
- 2 Make university or job applications stand out
- 3 Greater variety of assessments – it is not all exams!
- 4 The chance to experience different types of programmes
- 5 High levels of support from tutors and lecturers



**ASK US ABOUT YOUR  
OPTIONS TO MIX AND  
MATCH WHEN YOU VISIT  
AN OPEN EVENT OR  
INTERVIEW**





# Apprenticeships

**STEP OUT OF THE  
CLASSROOM AND  
EARN WHILE YOU  
LEARN WITH AN  
APPRENTICESHIP.**

Apprenticeships are real jobs that follow a training framework, so you earn while you learn and finish with valuable training experience. Typically one day per week is spent at college, while the rest of the time is in the workplace.

Look out for apprenticeships throughout this guide and search for vacancies at [farn-ct.ac.uk/apprenticeships](http://farn-ct.ac.uk/apprenticeships)

Once you've found a course to apply for, contact our team on **01252 407299** to find out how to get your new career off to a running start!

## KEY FACTS

- Apprenticeships take between one and four years to complete
- Anyone aged 16+ can apply
- They start throughout the year
- You can study up to degree level

## TRAINEESHIPS

If you don't quite meet the entry requirements for an apprenticeship Traineeships can help you to give you the skills needed to progress to these courses. Depending on your age, you may also be able to progress into employment.



**LOOK OUT FOR  
APPRENTICESHIPS  
THROUGHOUT THIS  
PROSPECTUS**

# T-LEVELS

THE NEXT LEVEL QUALIFICATION

**A NEW TYPE OF  
QUALIFICATION,  
CREATED WITH CAREERS  
IN MIND.**

T Levels are two-year technical programmes that have been designed with employers to give young people the skills that industry needs.

The technical skills you'll learn will be put into practice through a 45-day industry placement, giving you a chance to discover what a career is like while studying. Options after T Levels include progressing to skilled careers, apprenticeships, or university.



**T LEVELS ARE  
AVAILABLE IN  
MANY SUBJECTS**

Look out for the T Level logo throughout this prospectus

**FYZAH**

Pictured on the left

Assisting Teaching T Level

Work Placement:

North Farnborough Infant School

'T levels are good for those people who want to have a practical element to their course. The teachers here are really easy to talk to and always there for you.'

**THE COURSES ARE A TECHNICAL ALTERNATIVE TO A LEVELS AND ARE MADE UP OF THREE ELEMENTS:**

**CORE  
CONTENT**

**YEAR 1**

Key theories, skills and concepts for your chosen pathway



**SPECIALIST  
CONTENT**

**YEAR 2**

Determined by the occupational specialism you choose



**INDUSTRY  
PLACEMENT**

At least 45 days spent with an employer









**SUCCESS IN THE MAKING****KINNEH****BUSINESS**

NOW A GRADUATE SOLUTIONS  
ARCHITECT IN THE AVIATION SECTOR  
FOR SITA

"After studying business I went on to study Business Information Systems at the University of Westminster.

Although the aviation industry, and the subjects I studied, are very male-dominated, I very feel empowered to be doing what I do as a woman. I think some people think 'only men' should be doing those kinds of roles but that's not true, and it shouldn't stop you from following your dreams. Stick with a mindset to achieve!"

**"WHAT I REMEMBER MOST ABOUT  
MY TIME AT THE COLLEGE WAS  
THE SUPPORTIVE GROUP OF  
FRIENDS I MADE."**

## EXCITING TRIPS

Many of our courses involve opportunities to go on trips for a chance to see our subjects in action in the real-world

## TRAVEL DISCOUNTS

We work with Stagecoach and South Western Railway to provide more affordable transport

## COSTA COFFEE SHOP

There are plenty of food and refreshment options on campus, including a Costa coffee shop, large canteen, and our student-run Gallery Restaurant

## FREE CAR PARKING ON CAMPUS

We encourage green travel where possible, such as public transport or cycling

# WHAT'S IN IT FOR YOU?

Besides your course and preparing for an incredible career, there's a whole lot more you can look forward to at Farnborough. Joining us provides great opportunities to make friends and learn wider skills, with lots of extra perks along the way...

## AFFORDABLE HAIR AND BEAUTY TREATMENTS

Thanks to our on-site training salons, you can get everything from a trim to a massage at a fraction of the usual high street price

## FREE GYM ACCESS

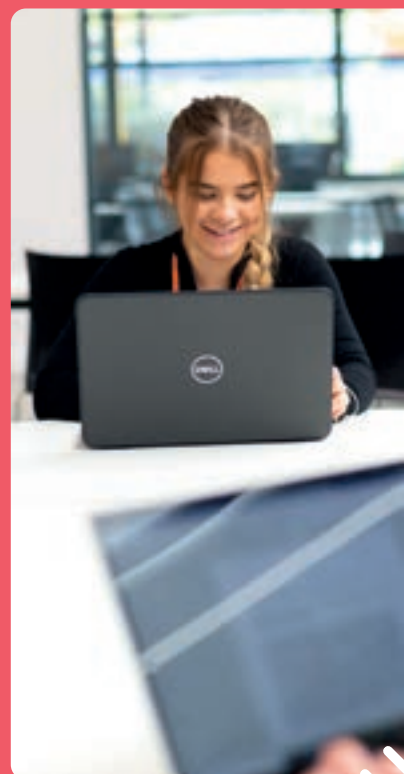
The College gym is equipped with modern equipment, free for all learners to take advantage of at specified times

## DISCOUNTS AT THE CHECKOUT

You can buy a TOTUM card to get discounts almost anywhere, whether it's fashion, the cinema, or equipment for college!

## BE SOCIAL

Find us on social media







### FREE WI-FI

Connect anywhere in the College to high-speed broadband

### CASHLESS CATERING

You can use your learner ID card to pay for food in the canteen, making it easier to pay and receive bursary funding for meals

### FREE SOFTWARE

As a student with us you can download the full Microsoft Office Suite for free, so you can continue working at home or on the move

### VIDEO ON-DEMAND AND MORE

Our Planet Estream service gives you access to thousands of videos to help with your studies, from TV to documentaries

### LOANABLE LAPTOPS

We have laptop lockers dotted around the campus, making it possible to borrow a device for a day by simply swiping your learner ID card

## TOP TECH



### MICROSOFT INNOVATORS

A number of our lecturing staff have achieved Microsoft Innovator status for their up-to-date skills and experience using Microsoft Office software

### STUDY TOOLS

Finding resources for your studies is just a click away using our innovative library search tools - from physical books to digital journals

### PLEASE VISIT OUR WEBSITE FOR FULL INFORMATION ON THESE BENEFITS

# PERSONAL DEVELOPMENT +

**PERSONAL DEVELOPMENT + IS A PROGRAMME OF ACTIVITIES DESIGNED TO ENRICH YOUR TIME AT COLLEGE AND EXPAND YOUR SKILLS AND EXPERIENCES. FROM SOCIAL CLUBS TO WORK-RELATED OPPORTUNITIES, HERE'S WHAT YOU'LL HAVE ACCESS TO:**

## WEEKLY PERSONAL DEVELOPMENT ACTIVITIES

On Wednesday afternoons, we host a range of activities you can get involved in for an opportunity to expand your skills and try out new things - from crafts and sports, to robotics and competitive gaming.

## GUEST TALKS AND WORKSHOPS

Regular visits from employers and professionals will enrich your learning and bring your studies to life.

## LEARNER VOICE

You can help out at college events by joining our Student Ambassador Scheme, or share the voice of your fellow students as a class representative or governor.

## FUNDRAISING

Our learners know how to put the fun in fundraising, with previous activities including cake sales, sponsored walks, charity football matches and more!

## TUTORIALS AND SUPPORT

Our weekly tutorial programme will cover all kinds of important topics, ranging from how to live a healthy lifestyle to discovering the diversity of our country and more. It's also your chance to talk to your tutor about how you're getting on with your course and make plans for your future.

## CAREERS EDUCATION

Your career aspirations are among our top priorities as a college, so we'll provide you with plenty of opportunities to develop your employability skills. See page 38 for details on our career advice service, employer talks, and resources to help you discover how the job market is changing.



**SUCCESS IN THE MAKING****HARRY****A LEVELS**

TAKING A GAP YEAR BEFORE  
STARTING AN APPRENTICESHIP

"Studying here has provided me independence which has further boosted my confidence. One opportunity I got involved with was our College radio station where I had my own talk show. The radio technician provided me industry related contacts to help with my employment and I am now in contact with them."

**"I WAS HELPED TO SECURE A WORK  
PLACEMENT AT READING CROWN  
COURT. IT WAS GREAT TO EXPERIENCE  
SOMETHING DIFFERENT."**



**SUCCESS IN THE MAKING****LUCY****HEALTH AND  
SOCIAL CARE**

NOW STUDYING ADULT NURSING AT  
THE UNIVERSITY OF PORTSMOUTH

"I liked that this subject included some biology and the fact that I could help people was really appealing to me.

All the topics looked interesting, plus the variety of assignments really motivated me as I got to use different skills.

The variety of topics meant you could find what you're most interested in, from working with vulnerable children to safeguarding the elderly. This helped me to pick my degree as I found a passion for caring and adult nursing."



**"THE PLACEMENTS WERE SO BENEFICIAL. I WENT TO A SCHOOL, A CARE HOME, AND HAD THE OPTION TO GO TO FRIMLEY PARK HOSPITAL."**



# OUR LATEST INVESTMENTS

**WE'RE CONTINUING TO INVEST IN OUR CAMPUSES, TO GIVE YOU ACCESS TO GREAT FACILITIES AND SPACES THAT ARE CLOSELY LINKED TO THOSE USED BY REAL EMPLOYERS.**

## 1. ESPORTS AND DIGITAL

We've recently updated our digital facilities with a refreshed look, new computers, and some fantastic tech to support your studies. This includes our incredible new Esports facility.

## 2. AEROSPACE RESEARCH AND INNOVATION CENTRE (ARIC)

The latest building at our expanding campus. ARIC is set to become an iconic aerospace gateway for engineers and businesses, providing learners with greater opportunities to collaborate with local employers.

## 3. MEDTECH CENTRE

Our new MedTech Centre provides learners on our Health, Healthcare Science, and Science T Levels with access to state-of-the-art scientific and medical training equipment, a dedicated space for STEM activities, and opportunities to collaborate with STEM employers.

## 4. ENGINEERING

Our engineering facilities are bigger than ever before! Containing our very own aircraft, specialised workshops, and quiet working spaces, you'll have everything you need to excel in this hands-on area.

## 5. EMERGING TECHNOLOGIES CENTRE

Here you'll discover the latest in technology. Home to virtual reality testing areas, robotics, drones, 3D printers and more, learners from all subject areas can use this facility to discover the application of technology in their industry of interest.

## 6. UNIVERSITY CENTRE FARNBOROUGH

This modern building contains our well-stocked library, a Costa Coffee bar and quiet independent learning spaces. It's also where we teach our degrees and university-level courses!

**WE'VE INVESTED  
£300K+**

in new technology across campus  
– from loanable laptops to  
programmable robots







3



**£7.7M**

has been invested in our  
University Centre Farnborough  
facilities

4

5

6

EMERGING  
TECHNOLOGIES  
CENTRE

# INNOVATIVE FACILITIES

## DISCOVER SOME OF THE SPACES YOU COULD BE LEARNING IN:

### 1. AEROSPACE AND AUTOMOTIVE ACADEMY

- Welding booths
- Vehicle Workshop
- Computer-aided Design (CAD) Labs

### 2. CAREERS LIBRARY

### 3. CONSTRUCTION CAMPUS

- Bricklaying workshop
- Carpentry workshop
- Electrical bays
- Plumbing workshop

### 4. CREATIVE STUDIOS

- Art and fashion studios
- Apple Mac suites
- Darkroom and photography studios
- Digital printing facilities
- Floristry design studio

### 5. EARLY YEARS SIMULATION CLASSROOMS

### 6. ENGINEERING WORKSHOPS

- Aerospace maintenance suite
- Composites centre
- Electronics lab
- 3D printers

### 7. GALLERY RESTAURANT

- Pastry kitchen
- Savoy Kitchen
- Professional restaurant space

### 8. GYM AND SPORT SCIENCE LAB







5



6



7

8





9

**9. IT SUITES****10. MEDTECH CENTRE****11. MEDIA PRODUCTION FACILITIES**

- TV Studio
- Radio Studio

**12. PERFORMANCE SPACES**

- Dance studio
- Recording and mixing studios
- Theatre

**13. SCIENCE LAB****14. STUDY SPACES****15. THE HAIR AND BEAUTY ACADEMY**

10



11



12



13



14



15



**ELLIE**

Engineering

"The College always felt very safe and friendly, and I'd never seen such a broad array of equipment before coming here."

# ALDERSHOT COLLEGE

**OUR CONSTRUCTION COURSES ARE TAUGHT AT  
OUR PURPOSE-BUILT CAMPUS IN ALDERSHOT,  
PACKED WITH DEDICATED WORKSHOPS AND  
SPECIALIST EQUIPMENT.**

As a long-established college with experience in teaching the four main trades, we are proud to have enabled thousands of careers in the construction industry.

We recommend attending an Open Event to see the huge scale of the College, as well as the range of tools and facilities that'll kick-start your career!

- Dedicated areas for each trade: Bricklaying, Carpentry, Electrical Installation, and Plumbing, and our Advanced Construction T Levels
- Strong links with local employers for progression to apprenticeships
- Construction Research and Innovation Centre, containing a modern computer suite and library
- Modern tools, equipment and surroundings
- Access to all the same services and facilities at the Farnborough campus

## VISIT AN OPEN EVENT

**THURSDAY 20 OCTOBER 2022**  
4.00 - 7.30PM

**TUESDAY 22 NOVEMBER 2022**  
4.00 - 7.30PM

**THURSDAY 9 FEBRUARY 2023**  
4.00 - 7.30PM

REGISTER AT  
**FARN-CT.AC.UK/EVENTS**

## FIND US ON SOCIAL MEDIA...

**FACEBOOK**  
**@Aldershot College**

**INSTAGRAM**  
**@AldershotConstructionCollege**







**"WE ARE PROUD  
TO HAVE ENABLED  
THOUSANDS OF  
CAREERS."**



**ASH**

Level 1 Carpentry

'Studying at Aldershot helped give me confidence. I made the most of high quality equipment and tools alongside friendly and supportive teachers'



## LEARNERS AT FARNBOROUGH HAVE AN UNRIVALLED OPPORTUNITY – THE CHANCE TO STAY WITH US FOR A UNIVERSITY-LEVEL COURSE.

Degrees are done differently at Farnborough. We don't believe in big lecture theatres and getting lost in the crowd. Instead we make the most of classroom-based lectures, where you can get to know your classmates and ask questions whenever you need support.

Staying with us for your degree makes for a smooth transition, and comes with a number of benefits:

- ▶ Friendly and familiar, you'll be taught by lecturers you already know with plenty of opportunities for personalised feedback and support
- ▶ Our degrees are awarded by the University of Surrey, with teaching taking place at our dynamic University Centre here in Farnborough
- ▶ You can choose from a range of two-year accelerated degrees, which allow you to graduate sooner and save on tuition fees
- ▶ There's no need for an interview as lecturers will already know you!



### DURGA

Photography

"There are diverse students here, helpful staff and tutors. I've met new friends and I'm really enjoying my course"

## TWO-YEAR ACCELERATED DEGREES

**GRADUATE FASTER  
AND FOR LESS**

**VISIT**

**FARNBOROUGHDEGREES.COM**



# COLLEGE AND DEGREES

IN ONE  
PACKAGE



IN ONE  
PACKAGE!

IN ONE  
PACKAGE





**SUCCESS IN THE MAKING****LUKE****FORMER CREATIVE  
MEDIA STUDENT**

NOW WORKING AS A FREELANCER  
FOR MAJOR TV PRODUCTIONS

"The course offered insight into every depth of the industry, from production management, to handling a camera, to knowing how to manage contributors. After the course I studied a TV and Radio Production degree in Salford and started working on productions like The Voice, X Factor, and Ambulance. I've progressed from the bottom to lead me where I am today."

A young man with dark hair, wearing a blue and white striped polo shirt and blue shorts, is sitting on a black stool. He is looking towards the camera with a slight smile. His hands are clasped in his lap. The background is a vibrant, colorful room with large panels of blue, red, and purple. To the right, there is a red cabinet with a white countertop and a green backsplash. A white mug is visible on the counter.

**"I'VE GONE ON TO  
WORK ON A RANGE  
OF TELEVISION  
PRODUCTIONS."**

# SUPPORTING YOU

**WE OFFER A RANGE OF DEDICATED SUPPORT SERVICES TO ENSURE YOU STAY HAPPY AND HEALTHY AT COLLEGE.**

Our friendly Learner Services Team offer a one-stop-shop of support, helping learners with everything from bus passes to health advice.

## HEALTH AND WELLBEING

We know that your health and wellbeing can have a big impact on your studies, and this is where our Counselling Team and Health and Wellbeing Adviser can help!

Confidential appointments, drop-in advice sessions, and plenty of resources are just a few of the ways they can support you.

[farn-ct.ac.uk/talk](http://farn-ct.ac.uk/talk)

## MONEY MATTERS

Eligible learners can apply for a bursary to help with the costs of lunches, travel, equipment and more. There are also lots of discounts available to all learners on travel, technology and more!

[farn-ct.ac.uk/money-matters](http://farn-ct.ac.uk/money-matters)

## SPECIALIST SUPPORT

For those with a special educational need or disability, we have a wide range of support in place to empower you and help you to develop independence. Our dedicated team of learning support workers, specialist tutors and key workers aim to remove barriers and ensure you achieve your best.

[farn-ct.ac.uk/send](http://farn-ct.ac.uk/send)

## LEARNER SERVICES

Our Learner Services Team are accredited to the Matrix Quality Standard for their Information, advice and guidance services.





**SUCCESS IN THE MAKING****RAFAEL****FORMER ESOL AND  
PUBLIC SERVICES  
STUDENT**

NOW STUDYING A DEGREE IN  
PROFESSIONAL POLICING AT THE  
UNIVERSITY OF WINCHESTER

"I moved here from the Philippines without any GCSEs. I was incredibly shy but the ESOL course helped me to develop my English skills, make friends, and progress onto a full-time course. I went on to study Public Services and the background knowledge it has given me has helped in my degree."

**"THE ESOL COURSE WAS A GREAT  
START TO COLLEGE ESPECIALLY AS  
I WAS NEW TO THIS COUNTRY."**

# CAREERS FOCUS

**WE'LL HELP YOU TO GROW YOUR EMPLOYABILITY**

**SKILLS BEYOND YOUR CORE STUDIES, MAKING**

**YOUR TIME AT COLLEGE EVEN MORE VALUABLE**

**THAN YOU COULD HAVE IMAGINED.**

There's lots of support on offer throughout the year, whether your next steps are further study or employment.

## THE INSTITUTE FOR CAREER ENHANCEMENT

This is the package of careers resources, support services, and facilities that you'll have access to while studying at Farnborough, to ensure you begin your career with a flying start and plenty of industry insight.

## CAREERS APPOINTMENTS

You can access one-to-one sessions with our dedicated Careers Team for advice on choosing a career path, finding job vacancies, preparing for interviews and much more.

## CAREERS EVENTS

We host a number of events that provide opportunities to meet employers and universities, and plan your future. Careers fairs, UCAS fairs and our own progression events are great ways to discover career pathways.

## CAREERS LIBRARY

All you need to start preparing for your future, in one place! The Careers Library contains computers for CV writing and careers research, resources for career planning, university prospectuses, and guidance for completing your UCAS application.

## DEGREE PASSPORT SCHEME

Choosing A Levels, a T Level or a level 3 programme? Thinking about university? The Degree Passport Scheme will help you put your best foot forward when applying. We'll support you in exploring your options through a combination of:

- Tutorials
- Passport booklet containing information and important dates
- Visits to UCAS fairs

Look for the 'Degree Passport Scheme' logo throughout this guide to find courses linked to the scheme.

## LEARNER SERVICES

Our Learner Services Team are accredited to the Matrix Quality Standard for their Information, advice and guidance services.



## ABIGAIL

Fashion

"Studying at Farnborough provided many opportunities to attend various Fashion shows which gave me the ability to network and make contacts within the industry."



## 500+ EMPLOYERS ENGAGED

We've engaged with over 500 employers for our apprenticeships and industry placements

### ENTREPRENEURSHIP

If you're thinking about running your own business, our staff have a wide range of skills to support you with getting started and preparing to launch your idea. We also host an annual Dragons' Den-style competition with a chance to secure funding towards your business.

### INDUSTRY LINKS

We work with lots of employers to ensure our courses cover skills that will be needed for the workplace of the future. Industry placements are an important part of many of our courses too, so you could benefit from the links we've established in all kinds of industries.

### LABOUR MARKET INFORMATION

We ensure our qualifications are relevant to the current and future needs of industry and have invested resources to provide students with up-to-date labour market information.

Explore job descriptions, employment trends, progression pathways, and live job vacancies at [www.farn-ct.ac.uk](http://www.farn-ct.ac.uk).

### LOCAL VACANCIES

Our online Jobs Board advertises local vacancies that are suitable for our learners. Whether part-time work or jobs for when you finish, many employers advertise through us because they know how great our learners are in the workplace!



## LEAVERS' CAREERS PACKAGE

In the final term of your course, you'll get the chance to have a:

- Professional-style photo taken for your LinkedIn profile
- Review of your social media profiles
- Final check of your CV and covering letter
- Mock interview

All to get you ready for your new career!




**SUCCESS IN THE MAKING****SMRITI****FORMER FASHION  
AND TEXTILES  
STUDENT**

NOW STUDYING FASHION KNITWEAR  
AT CENTRAL SAINT MARTINS


"As the course focused on one subject it gave me a more direct route for the future. I got to try out new techniques to see different aspects of the fashion industry, which helped me to decide which area I wanted to specialise in. I've now started my degree in fashion knitwear."





**"WE GOT TO HELP OUT BACKSTAGE  
AT TOP MODEL, WHICH WAS A GREAT  
CHANCE TO SEE WHAT WE COULD BE  
DOING AFTER COLLEGE."**





We offer free, personalised revision sessions to help boost your performance in exams

COURSES >>>

# A LEVELS



## EXTENDED PROJECT

Take your skills further by completing an **Extended Project Qualification** alongside your A Levels



Our A Levels department has its own dedicated area on campus, with quiet working spaces, bright airy classrooms, and a well-equipped science lab



You'll have access to in-depth help with university and UCAS applications



## STAY FOR YOUR DEGREE

You may have the option to stay with us for a degree at **University Centre Farnborough (P32)**

## A LEVELS ARE A GREAT CHOICE FOR THOSE WHO THRIVE IN A CLASSROOM SETTING AND WANT TO STUDY MORE THAN ONE SUBJECT.

Classes at Farnborough are close-knit and often smaller than those at larger sixth forms, so you can look forward to plenty of opportunities for feedback and support. Our team of friendly, qualified lecturers will provide resources and guidance to help you feel prepared for your next steps after college, whether that's university, an apprenticeship, or employment.



## MIX AND MATCH

We offer the opportunity to combine A Levels with a Level 3 BTEC or T Level qualification, to give you a wider mix of skills and help you stand out on applications.

Your timetable will include two hours of weekly tutorials for guidance

# A LEVELS

By looking at popular combinations of A Levels, we have grouped our subjects together to offer you a distinct set of choices that form a pathway to particular university courses and careers.

Your pathway consists of three A Level subjects, with an additional subject available for each pathway.

For example, our Engineering Pathway's core subjects are Maths and Physics, with your choice of either Geography, Business, or Economics.



## PATHWAYS >>>

### MEDICAL HEALTH PATHWAY

**Core:** Biology and Chemistry

Choose one extra from: Psychology, Criminology, or Maths

### ENGINEERING PATHWAY

**Core:** Maths and Physics

Choose one extra from: Geography, Business, or Economics

### CRIMINOLOGY/SOCIAL SCIENCES PATHWAY

**Core:** Criminology and Sociology

Choose one extra from: Psychology, Philosophy, or Biology

### LAW AND LEGAL PATHWAY

**Core:** Criminology and Law

Choose one extra from: Biology, English, Philosophy, or Psychology

### BUSINESS PATHWAY

**Core:** Business and Economics

Choose one extra from: Law, Sociology, or Maths

### HUMANITIES PATHWAY

**Core:** English and History

Choose one extra from: Geography, Law, Sociology, or Business

### GEOGRAPHY AND ENVIRONMENTAL PATHWAY

**Core:** Geography and Biology

Choose one extra from: Chemistry, Law, History, or Sociology

### ENTRY REQUIREMENTS\*

FROM SCHOOL	FROM COLLEGE	ADDITIONAL ENTRY REQUIREMENTS
Five GCSEs at grades 9-4 (including English and maths)	Relevant level 2 qualification at merit grade or higher (including English and maths GCSEs at grades 9-4)	<b>MATHS A LEVEL</b> Grade 6 at GCSE maths <b>PSYCHOLOGY A LEVEL</b> Grade 5 at GCSE maths <b>BIOLOGY, CHEMISTRY AND PHYSICS A LEVEL</b> GCSE grade 5 in subject or 5 in core and additional science; plus grade 5 in maths

\*Good attendance in your previous year is also required. Some courses require a higher grade in a particular subject – see our website for full details. Some related careers may require extra qualifications or experience. Plan your career at [farn-ct.ac.uk/career-zone](http://farn-ct.ac.uk/career-zone).







## A LEVEL SUBJECTS

### BIOLOGY

Have you ever wondered what the human body is made of, how we fight off diseases, and what role plants play in our lives? The study of biology provides a fascinating insight into all of these areas and more. At Farnborough, you will learn hands-on in our science lab, bringing biology to life through exciting experiments, research projects and dissections.

### BUSINESS STUDIES

Through this course you will explore the business behaviours that can bring success or failure to a company, whether it is a small-scale charity or global corporation. You will discover exactly what business is and does, gaining the insight and skills needed to succeed in a range of industries and entrepreneurship.

### CHEMISTRY

Studying chemistry at Farnborough involves learning hands-on in our science lab, conducting experiments with a variety of chemicals and elements to observe their effects. You will discover chemistry's role in society and how it can provide innovative solutions to challenges in the modern environment.

### ECONOMICS

Economics is the study of money from a social perspective. The way that organisations, societies and even countries manage their resources can be a fascinating topic - from the ethics of bankers' bonuses to the effectiveness of government spending. The study of economics will provide you with a broad range of skills and understanding, taking insights from social sciences and history.

### ENGLISH LANGUAGE/ LITERATURE

The way we use language can shape the difference between a gripping dramatic novel, an entertaining play and a powerful news article. At Farnborough, you can look forward to learning in close-knit classes with opportunities to discuss and debate literature. You will explore a range of novels, plays and poetry, as well as sharpening your skills in written and spoken word.

### GEOGRAPHY

If you are fascinated by the world around you, geography explores the range of factors that influence our surrounding environment and way of life. At Farnborough, previous course activities have included analysing soil samples from Malta in our science lab and taking a trip to the British coast to study flood defences and regeneration.

### HISTORY

Historical events have shaped society worldwide into what it is today. Within the study of history, you will explore how events that happened many years ago continue to influence school curriculums, laws and policies, and cultural celebrations. You will discover that knowing how people lived in the past helps us to understand why people act as they do today.

### LAW

Law determines what is right and wrong in our society. Within the study of law, you will explore the English Legal System, discovering how criminals are dealt with and the ways that laws influence our parliamentary system. You will have opportunities to discuss and debate current legislation and the advantages or disadvantages these can bring.

### MATHS

Mathematical ability is a key skill to have in many careers and is used regularly in our everyday lives. In the study of maths, you will sharpen your problem-solving and reasoning skills, as well as learning key mathematical concepts to take your skills further. At Farnborough, our close-knit classes mean you will have plenty of opportunities to ask questions and receive personalised support.

### PHILOSOPHY

Philosophy explores the responses to some of life's big questions, encouraging you to question and analyse your own views of the world around us. You will learn to develop logical arguments supported by observational evidence, as well as examining the discoveries and opinions of the world's most famous philosophical thinkers.

### PHYSICS

Physics underpins the understanding of every aspect of our world - with theoretical principles helping to explain how the smallest part of the human body works to the existence of great clusters of galaxies in space. At Farnborough, you will conduct hands-on experiments in our science lab and learn from lecturers who bring their experiences in the industry to their teaching.

### PSYCHOLOGY

Studying psychology will give you a fascinating insight into the human mind, seeking to explain human behaviour and interaction through scientific research and social experiments. You will explore the different branches of psychology that seek to explain our thoughts, emotions and behaviour, discovering the influences of biology, child development, mental health and more.

### SOCIOLOGY

Sociology seeks to understand how groups of people interact with each other within society and why this differs between societies. This fascinating subject explores the influences that culture, class, power, crime, inequality, gender, ethnicity and more, all have on societal behaviour. The study of sociology can lead to a wide range of progression options.





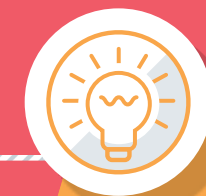


Students often stay with us for a degree at University Centre Farnborough

Yasmin - Business Graduate "I've been on the course since college, so it was a smooth transition and a nice way to start university"

COURSES >>>

# ACCOUNTING, BUSINESS AND TRAVEL & TOURISM



**DID YOU KNOW?**

Chartered Accountants in the South East **earn** an average salary of £47,320



Talks from guest speakers will put your studies into a real-world context



**T-LEVELS**  
THE NEXT LEVEL QUALIFICATION

The next level qualification - T Levels available in this area





We host an annual entrepreneurship competition to help kick-start learner-run businesses



## CAREER SPOTLIGHT

The demand for Business Professionals in our area is expected to **increase 3.2%** by 2025



## NEW ESPORTS COURSE

Find out more on page 86!

Previous trips have included Dubai and the Virgin Atlantic Training Centre

## CALLING ALL ASPIRING ACCOUNTANTS, BUDDING ENTREPRENEURS, AND FUTURE JETSETTERS – LAUNCH AN EXCITING CAREER WITH SUPPORT FROM OUR INDUSTRY CONNECTIONS.

Taught as part of our Hampshire Business School suite of courses. Your studies will take place in our Emerging Technologies Centre - a bright open space with independent study areas and spacious classrooms. These courses are taught by experienced staff who also teach our degrees, so you can look forward to receiving industry insight throughout your studies.

### INDUSTRY LINKS

We're proud to have connected learners with:

- ▶ **Rushmoor Borough Council**
- ▶ **TAG Global Training**
- ▶ **The Ritz**
- ▶ **Virgin Atlantic**

 **UNIVERSITY CENTRE FARNBOROUGH**

**STAY AT FARNBOROUGH FOR YOUR DEGREE!**

See page 32

# ACCOUNTING AND FINANCE

Accounting and finance are ideal subjects for those who enjoy solving problems and crunching numbers. Future careers could involve supporting individuals, small businesses, or even global corporations with their monetary needs. In your first year you'll learn the core knowledge needed for jobs in these industries, studying specialist content in your second year to focus your skills.

## T LEVEL ACCOUNTING

LEVEL 3  2 YEARS

- ▶ This T Level will introduce you to the fundamentals of financial accounting - from bookkeeping to business mathematics
- ▶ The specialist content covered in this T Level is 'Assistant Accountant'
- ▶ You'll be equipped with an understanding of professional and ethical working, as well as developing skills in data analytics and visualisation tools ready to take into your new career

You could progress to university-level study, an apprenticeship, or employment.

### RELATED CAREERS

- ▶ Accounting Technician
- ▶ Finance Officer
- ▶ Payroll Administrator
- ▶ Payroll Manager



DEGREE PASSPORT SCHEME

## T LEVEL FINANCE

LEVEL 3  2 YEARS

- ▶ Discover the business environment and the key financial accounting practices used by businesses
- ▶ Your choice of specialist content includes retail and commercial banking analyst, investment banking and asset and wealth management analyst, insurance practitioner, or financial compliance/risk analyst
- ▶ The knowledge and skills you'll develop can lead to a range of exciting finance occupations

You could progress to university-level study, an apprenticeship, or employment.

### RELATED CAREERS

- ▶ Credit Manager
- ▶ Insurance Underwriter
- ▶ Mortgage Adviser
- ▶ Pensions Administrator



DEGREE PASSPORT SCHEME

## LEVEL 3 ACCOUNTING (AAT)

LEVEL 3  2 YEARS

- ▶ Association of Accounting Technicians (AAT) qualifications are internationally recognised and can open doors in a number of industries
- ▶ You'll explore topics in advanced accounting, ethics for accountants, tax, management accounting, and financial accounts preparation
- ▶ The skills you'll develop will give you the foundation needed to launch your career or progress to further study

You could progress to university-level study, an apprenticeship, or employment.



### RELATED CAREERS

- ▶ Assistant Accountant
- ▶ Finance Assistant
- ▶ Payroll Supervisor
- ▶ Tax Assistant



DEGREE PASSPORT SCHEME

## LEVEL 2 ACCOUNTING (AAT)

 T LEVEL TRANSITION LEVEL 2  1 YEAR

- ▶ This introductory course uncovers the key concepts and skills needed to succeed in accounting
- ▶ Studies include bookkeeping transactions, elements of costings, accounting software and computerised accounts

You could progress to a level 3 qualification, such as T Level Accounting, T Level Finance, or Level 3 Accounting (AAT), or an apprenticeship. You may also be able to seek employment at junior-level.

ENTRY REQUIREMENTS*	FROM SCHOOL	FROM COLLEGE
T Level / Level 3	Five GCSEs at grades 9-4 (including English and maths)	Relevant level 2 qualification at merit grade or higher (to include English and maths at level 2 or higher)
Level 2	Four GCSEs at grades 9-3 (including English and maths)	Entry level 3 qualification in English and maths

\*Good attendance in your previous year is also required. Some courses require a higher grade in a particular subject – see our website for full details. Some related careers may require extra qualifications or experience. Plan your career at [farn-ct.ac.uk/career-zone](http://farn-ct.ac.uk/career-zone).

# BUSINESS

The study of business explores a wide scope of topics - from entrepreneurship and management, to events and marketing. With such a broad range of knowledge and transferable skills covered, your options for the future will be kept wide open.



## ANY QUESTIONS?

### GET IN TOUCH

01252 407040

[INFO@FARN-CT.AC.UK](mailto:INFO@FARN-CT.AC.UK)

## LEVEL 3 BUSINESS

LEVEL 3 2 YEARS

- ▶ This course takes a detailed look into the world of business and entrepreneurship
- ▶ Topics you'll explore include business decision making, marketing campaign development, personal and business finance, event management, international business, and principles of management
- ▶ You'll discover the needs behind every successful business, ready to kick-start your career, launch your own business, or take your studies further at university-level

You could progress to university-level study, an apprenticeship, or employment.

**Stay for a degree at Farnborough – see P32**

### RELATED CAREERS

- ▶ Business Associate
- ▶ Entrepreneur
- ▶ Human Resources Officer
- ▶ Marketing Associate
- ▶ Sales Executive



### DEGREE PASSPORT SCHEME

You could progress to a level 3 qualification, such as Level 3 Business or T Level Management and Administration, or an apprenticeship. You may also be able to seek employment at junior-level.

## LEVEL 2 BUSINESS

T LEVEL TRANSITION LEVEL 2 1 YEAR

- ▶ Ideal for learners looking for a route to level 3 study and those progressing from our Level 1 Business and Vocational Skills course
- ▶ This course involves lots of job-related work and group projects, exploring topics in finance for business, marketing principles, brand promotion, customer service, and recruitment

You could progress to a level 3 qualification, such as Level 3 Business or T Level Management and Administration, or an apprenticeship. You may also be able to seek employment at junior-level.

## LEVEL 1 BUSINESS AND VOCATIONAL SKILLS

LEVEL 1 1 YEAR

- ▶ Our level 1 course provides a great background into the study of business, IT, and tourism, covering topics in communication, presenting a business idea, exploring visitor attractions, multimedia software and more
- ▶ With your new foundation of knowledge, you'll feel confident progressing to the next level and choosing a subject to specialise in
- ▶ This course includes preparation for employment, study at level 2, transferable skills, and work experience

ENTRY REQUIREMENTS*	FROM SCHOOL	FROM COLLEGE
Level 3	Five GCSEs at grades 9-4 (including English and maths)	Relevant level 2 qualification at merit grade or higher (to include English and maths at level 2 or higher)
Level 2	Four GCSEs at grades 9-3 (including English and maths)	Relevant level 1 qualification at merit grade or higher (to include English and maths at level 1 or higher)
Level 1	Four GCSEs at grades 9-2 (including English and maths)	Entry level 3 qualification in English and maths



# MANAGEMENT AND ADMINISTRATION

Management and administration roles help businesses to function by ensuring that staffing and business operations run smoothly. Thanks to 20% of your time being spent gaining experience in industry, this T Level will help you develop practical skills to get ahead and stand out from the crowd. You'll learn core industry knowledge in your first year and have a choice of specialist content in your second year.



**START THIS SEPTEMBER**  
**APPLY ONLINE NOW**  
**AT FARN-CT.AC.UK**

## T LEVEL MANAGEMENT AND ADMINISTRATION

**LEVEL 3**  **2 YEARS**

- ▶ This broad course can lead to careers in a wide range of industries, which could be office-based roles or beyond
- ▶ Your choice of specialist content includes business support, business improvement, or team leadership and management
- ▶ You'll be equipped with a good understanding of the business context, as well as exploring topics in project management, professional communication, and improving quality in public and private sector organisations



You could progress to university-level study, an apprenticeship, or employment.  
**Stay for a degree at Farnborough – see P32**

**RELATED CAREERS**

- ▶ Court Administrative Assistant
- ▶ Information Scientist
- ▶ Office Manager
- ▶ Personal Assistant




**DEGREE PASSPORT SCHEME**


# TRAVEL AND TOURISM

The travel and tourism industry is constantly evolving, developing new business tactics to attract customers, improving travel methods, and creating immersive experiences at destinations around the world. Kick-start your career in this exciting industry and join those at the forefront of tourism innovation.

## LEVEL 3 TRAVEL AND TOURISM

**LEVEL 3**  **2 YEARS**

- ▶ Discover how the tourism industry is changing and the clever ways that businesses work to drive profits
- ▶ As well as a comprehensive look into the world of travel and tourism, your studies will include topics around global destinations, marketing, business travel, and the airport experience
- ▶ You'll be equipped with practical business skills and a great understanding of how to create positive customer experiences



You could progress to university-level study, an apprenticeship, or employment.  
**Stay for a degree at Farnborough – see P32**



**RELATED CAREERS**

- ▶ Cabin Crew
- ▶ Conference Organiser
- ▶ Resort Representative
- ▶ Travel Agent




**DEGREE PASSPORT SCHEME**

## LEVEL 2 TRAVEL AND TOURISM

 **T LEVEL TRANSITION LEVEL 2**  **2 YEARS**

- ▶ This course is ideal for learners progressing from our Level 1 Business and Vocational Skills course and those looking for a route to level 3 study
- ▶ You'll develop a foundation knowledge of the travel and tourism industry, looking in-depth at the UK sector, international tourist destinations, promotion and sales, customer experience, and different business environments



You could progress to a level 3 qualification, such as Level 3 Travel and Tourism, or an apprenticeship. You may also be able to seek employment at junior-level.

ENTRY REQUIREMENTS*	FROM SCHOOL	FROM COLLEGE
T Level/Level 3	Five GCSEs at grades 9-4 (including English and maths)	Relevant level 2 qualification at merit grade or higher (to include English and maths at level 2 or higher)
Level 2	Four GCSEs at grades 9-3 (including English and maths)	Relevant level 1 qualification at merit grade or higher (to include English and maths at level 1 or higher)



# Apprenticeships

An apprenticeship in a business-based workplace could involve plenty of exciting roles. We work with organisations large and small, so your new employer could range from a local business to a large international company.

## BUSINESS

- ▶ Customer Service Practitioner (Level 2)
- ▶ Business Administrator (Level 3)
- ▶ Customer Service Specialist (Level 3)
- ▶ Team Leader / Supervisor (Level 3)
- ▶ Associate Project Manager (Level 4)
- ▶ Operations / Departmental Manager (Level 5)

## FINANCIAL SERVICES

- ▶ Assistant Accountant (Level 3)
- ▶ Professional Accounting / Taxation Technician (Level 4)

## HUMAN RESOURCES

- ▶ Human Resources Support (Level 3)
- ▶ Human Resources Consultant / Partner (Level 5)
- ▶ Senior People Professional (Level 7)

## MARKETING

- ▶ Digital Marketer (Level 3)
- ▶ Marketing Assistant (Level 3)
- ▶ Marketing Executive (Level 4)

**SEE ONLINE  
FOR ENTRY  
REQUIREMENTS**

[Farn-ct.ac.uk/apprenticeships](http://Farn-ct.ac.uk/apprenticeships)



COURSES ►►

# CARE SERVICES AND EDUCATION



## DID YOU KNOW?

Nationally, Health  
Professionals earn an  
average salary of £40,560

Previous work  
placements have  
included schools,  
the NHS, and  
ambulance service

A

Facilities include  
Early Years  
Simulation  
Classrooms and  
our new MedTech  
Centre, containing  
state-of-the-art  
medical training  
devices



## Apprenticeships

Earn as you learn -  
apprenticeships available in  
this area



We work with local hospitals to support our health and social care programmes



## CAREER SPOTLIGHT

The demand for Primary Education Teaching Professionals in our area is expected to **increase 5.1%** by 2025



Many early years learners progress to teacher training

Chloe - T Level Assisting Teaching  
"A lot of us in my class are going into education. Some have secured a place to study teacher training at university and others part-time jobs as teaching assistants."



## T-LEVELS

THE NEXT LEVEL QUALIFICATION

The next level qualification - T Levels available in this area

**IF CARING FOR OTHERS OR INSPIRING THE NEXT GENERATION APPEALS TO YOU, LOOK NO FURTHER THAN THESE INCREDIBLY REWARDING AREAS OF STUDY.**

Our courses will not only give you the skills and experiences needed to thrive in these industries, but also a sector-recognised qualification to take you far. Your lessons will be enriched by insight from industry-experienced lecturers, and brought to life in facilities that replicate the work environment.

## INDUSTRY LINKS

We're proud to have connected learners with:

- ▶ **Frimley Park Hospital**
- ▶ **Corrina Lodge Care Home**
- ▶ **Devereux House Care Home**
- ▶ **Pippins Pre-school**
- ▶ **Pumpkin Patch Day Nursery**
- ▶ **Koosa Kids**
- ▶ **Home Instead**



**UNIVERSITY CENTRE  
FARNBOROUGH**

**STAY AT FARNBOROUGH  
FOR YOUR DEGREE!**

See page 32

# EDUCATION AND CHILDCARE

Careers in the education and childcare sector will see you playing a part in shaping the lives of young people. With fascinating insight into child development stages and the most effective teaching methods currently used in practice, you'll soon feel confident working with different ages and putting your skills into practice.



**USE OUR  
CAREER TOOLS  
AT FARN-CT.AC.UK**

## T LEVEL ASSISTING TEACHING

**LEVEL 3**  **2 YEARS**

- ▶ This T Level will provide the key knowledge and skills needed for a career in education, and a route to university for those looking to complete teacher training
- ▶ Studies include supporting teachers to enhance children's education, responding to individual children's needs, observation and assessment, and special educational needs and disability
- ▶ Thanks to the 45-day industry placement, you'll finish the course with relevant industry experience and practical workplace skills

You could progress to university-level study, an apprenticeship, or employment.

### RELATED CAREERS

- ▶ Teaching Assistant
- ▶ Learning Mentor
- ▶ Special Educational Needs Teaching Assistant



**DEGREE PASSPORT SCHEME**

## T LEVEL EDUCATION AND CHILDCARE

**LEVEL 3**  **2 YEARS**

- ▶ Prepare for a rewarding career working with young children and their families, while gaining relevant workplace experience along the way
- ▶ Topics covered on this course include child development, supporting education, equality and diversity, and special educational needs and disability
- ▶ With the skills and experiences gained on this course, you'll feel confident to progress to a career in a range of workplaces, such as schools, nurseries, and private homes

You could progress to a related subject at university-level study, such as early years or teacher training, an apprenticeship, or employment.

**Stay for a degree at Farnborough – see P32**


### RELATED CAREERS

- ▶ Childminder
- ▶ Early Years Practitioner
- ▶ Nursery Worker
- ▶ Playworker
- ▶ Teaching Support



**DEGREE PASSPORT SCHEME**

## LEVEL 2 EARLY YEARS PRACTITIONER

**T LEVEL TRANSITION LEVEL 2**  **1 YEAR**

- ▶ This course will provide a thorough introduction to the early years sector, with opportunities to complete valuable hands-on work placements during your studies
- ▶ You'll explore topics around the roles and responsibilities of the early years practitioner, supporting development, promoting play, and supporting children with special educational needs and disabilities

You could progress to a level 3 qualification, such as T Level Assisting Teaching or T Level Education and Childcare, or an apprenticeship. You may also be able to seek employment at junior-level.

ENTRY REQUIREMENTS*	FROM SCHOOL	FROM COLLEGE
T Level	Five GCSEs at grades 9-4 (including English and maths)	Relevant level 2 qualification at merit grade or higher (to include English and maths at level 2 or higher)
Level 2	Four GCSEs at grades 9-3 (including English and maths)	Relevant level 1 qualification (to include English and maths at level 1 or higher)

# HEALTH T-LEVELS

For those seeking a career in healthcare or the NHS, our T Level in Health will provide you with the practical workplace skills needed to enter a range of health occupations. Core industry knowledge is covered in the first year, followed by a chance to choose specialist content in the second year and work towards a part of the industry that interests you.

## T LEVEL HEALTH

LEVEL 3  2 YEARS

- Explore the hands-on skills needed to succeed in the health sector, brought to life in our new MedTech centre
- Your choice of specialist content includes supporting adult nursing teams, midwifery teams, mental health teams, therapy teams, or the care of children and young people
- You'll learn how to assist health professionals with clinical and therapeutic tasks, take physiological measurements, conduct good scientific and clinical practice, and what it tasks to assist with the overall care and needs of individuals



## BOOST YOUR CAREER

T Levels involve a 45-day industry placement

You could progress to university-level study, an apprenticeship, or employment.

### RELATED CAREERS

- Ambulance Care Assistant
- Care Worker
- Emergency Care Assistant
- Healthcare Assistant
- Palliative Care Assistant



DEGREE PASSPORT SCHEME

ENTRY REQUIREMENTS*	FROM SCHOOL	FROM COLLEGE
T Level	Five GCSEs at grades 9-4 (including English and maths)	Relevant level 2 qualification at merit grade or higher (to include English and maths at level 2 or higher)

SEE PAGE 114 FOR OUR T LEVEL IN HEALTHCARE SCIENCE





# HEALTH AND SOCIAL CARE

Whether you’re interested in supporting others with their physical health and wellbeing, or assisting with their day-to-day living, these courses will give you hands-on skills and a broad understanding of what it takes to care for others.



## LEVEL 3 HEALTH AND SOCIAL CARE

**LEVEL 3** **2 YEARS**

- ▶ By combining both health and social care, you have the choice to progress in either area when choosing a degree at university or applying to jobs
- ▶ You’ll explore topics in health and wellbeing, psychology and challenging behaviour, anatomy and physiology, physiological disorders, and public health
- ▶ Workplace experience is a key element of this course and you will complete 200 hours in placement for a chance to develop hands-on skills and see the industry in action

You could progress to university-level study, an apprenticeship, or employment.

**RELATED CAREERS**

- ▶ Care Worker
- ▶ Health Associate
- ▶ Midwife
- ▶ Nurse
- ▶ Social Worker
- ▶ Speech Therapist

**DEGREE PASSPORT SCHEME**

## LEVEL 2 HEALTH AND SOCIAL CARE

**T LEVEL TRANSITION LEVEL 2** **1 YEAR**

- ▶ Ideal for those progressing from our level 1 introductory course and learners looking for a route to level 3 study
- ▶ You’ll develop a good foundation knowledge of the industry, discovering the different roles played by professionals in the sector, ways of promoting health and wellbeing, human body systems and care disorders, and therapeutic activities used in health and social care

You could progress to a level 3 qualification, such as T Level Health or Level 3 Health and Social Care, or an apprenticeship. You may also be able to seek employment at junior-level.

## LEVEL 1 INTRODUCTION TO HEALTH AND SOCIAL CARE

**LEVEL 1** **1 YEAR**

- ▶ Our level 1 course provides a great introduction to the caring sector and a route to level 2 study
- ▶ Topics covered include healthy lifestyles, caring activities, communicating with children and adults, and safe use of equipment

You could progress to a level 2 qualification, such as Level 2 Health and Social Care or Level 2 Early Years Practitioner, or an apprenticeship.

ENTRY REQUIREMENTS*	FROM SCHOOL	FROM COLLEGE
Level 3	Five GCSEs at grades 9-4 (including English and maths)	Relevant level 2 qualification at merit grade or higher (to include English and maths at level 2 or higher)
Level 2	Four GCSEs at grades 9-3 (including English and maths)	Relevant level 1 qualification (to include English and maths at level 1 or higher)
Level 1	Four GCSEs at grades 9-2 (including English and maths)	Entry level 3 qualification in English and maths

\*Good attendance in your previous year is also required. Some courses require a higher grade in a particular subject – see our website for full details. Some related careers may require extra qualifications or experience. Plan your career at [farn-ct.ac.uk/career-zone](https://farn-ct.ac.uk/career-zone).

# Apprenticeships

## EDUCATION AND CHILDCARE

If you enjoy passing your skills and knowledge on to the next generation, a job working with children could be perfect for you. Your apprenticeship could involve working in a creche, nursery, or pre-school in various roles.

- ▶ Early Years Practitioner (Level 2)
- ▶ Early Years Educator (Level 3)
- ▶ Teaching Assistant (Level 3)

## CARE SERVICES

Apprenticeships in health and social care could involve working at a hospital, community care setting or voluntary organisation in various roles. There are lots of areas you could specialise in, but all will involve helping people with particular needs to lead healthy and fulfilling lives.

- ▶ Adult Care Worker (Level 2)
- ▶ Lead Adult Care Worker (Level 3)

## SEE ONLINE FOR ENTRY REQUIREMENTS

[farn-ct.ac.uk/apprenticeships](http://farn-ct.ac.uk/apprenticeships)



EARLY YEARS SIMULATION CLASSROOM





## DID YOU KNOW?

In our region, 45% of vacancies for Chefs are due to a skills shortage

COURSES >>>

# CATERING



## T-LEVELS

THE NEXT LEVEL QUALIFICATION

The next level qualification - T Levels available in this area

You'll master intricate cookery skills and grow your own micro herbs using our new Savoy Kitchen



Learners have achieved great success in the national HEAT Culinary Colleges and Nestle Torque d'Or competitions



## Apprenticeships

Earn as you learn - apprenticeships available in this area



Previous guest talks have included celebrity chefs and industry professionals



## CAREER SPOTLIGHT

By 2025 there is expected to be a **2.2% increase in employment** for Restaurant and Catering Managers in our area

## HOW DOES WORKING FOR A TOP HOTEL, RESTAURANT, OR VENUE SOUND? INCREDIBLE CAREERS AWAIT YOU AFTER OUR CATERING COURSES.

You'll be taught by staff who have led learners to win national competitions, benefiting from the wealth of industry knowledge they have to share. Plus, you'll have a chance to serve members of the public in our Gallery Restaurant, for a great taste of the workplace. If you love being in the heat of the kitchen and presenting high quality food to customers, look no further than these hands-on courses.

## INDUSTRY LINKS

We're proud to have connected learners with:

- ▶ **Heckfield Place**
- ▶ **Pennyhill Park Hotel and Spa**
- ▶ **The Ritz**
- ▶ **The Savoy**

Former patisserie learner Caitlin was named the Master Chefs of Great Britain 'Young Pastry Chef of the Year 2020-21'

"The competition has opened doors for me because I've made contacts and received a number of job offers"



THE GALLERY RESTAURANT

All of our training takes place in our Gallery Restaurant, which offers fine-dining at affordable prices to members of the public and learners - find out more [farn-ct.ac.uk/gallery](http://farn-ct.ac.uk/gallery)

# CATERING AND HOSPITALITY

Starting at level 1 and progressing to levels 2 and 3, we'll equip you with all the skills needed to be successful in the catering and hospitality sectors. You'll learn professional cookery practices from our talented lecturers, as well as fine-tuning your front-of-house skills to open doors to a range of culinary professions.

FIND US  
ON...



## LEVEL 1 FOOD AND BEVERAGE

LEVEL 1 — 1 YEAR

- ▶ You'll be introduced to the key skills needed to work in a professional kitchen and restaurant - from the main methods of cookery to service skills
- ▶ Straight away you'll get stuck-in learning hands-on in our training kitchens and interacting with real customers
- ▶ Studies include bar and hot beverage skills, preparation and cooking of food, food safety in catering, and processing bookings and payments

You could progress to a level 2 qualification, such as Level 2 Food and Beverage or Level 2 Professional Patisserie and Confectionary. Other options include apprenticeships or employment.

## LEVEL 2 FOOD AND BEVERAGE

LEVEL 2 = 1 YEAR

- ▶ This course will take your skills even further and build on the knowledge learned at level 1
- ▶ Challenging practical work will involve producing meals for members of the public and putting your front of house skills to the test
- ▶ You'll explore topics in menu knowledge and design, customer service, preparation and cooking, production of biscuit, cake and sponge products, hot beverage and barista skills, and table theatre skills

You could progress to a level 3 qualification, such as Level 3 Advanced Professional Cookery. Other options include apprenticeships or employment.

## LEVEL 3 ADVANCED PROFESSIONAL COOKERY

LEVEL 3 ≡ 1 YEAR

- ▶ Master more advanced cookery skills and work towards a role as a senior chef
- ▶ You'll attend college two days per week, giving you time to gain valuable industry experience alongside your studies
- ▶ Topics covered include supervisory skills in the hospitality industry, principles of food safety, practical gastronomy, and advanced cooking techniques in meat, poultry, game, fish, shellfish and vegetables

You could progress to a higher-level apprenticeship or employment.

### RELATED CAREERS

- ▶ Catering Manager
- ▶ Chef
- ▶ Concierge
- ▶ Hospitality Manager
- ▶ Pastry Chef
- ▶ Silver Service Server
- ▶ Sous Chef

ENTRY REQUIREMENTS*	FROM SCHOOL	FROM COLLEGE
Level 1	Four GCSEs at grades 9-3 (including English and maths)	Entry level 3 qualification in English and maths
Level 2	Learners joining this course will be progressing from the level 1 programme	This course is for learners progressing from the level 1 course. A level 1 qualification (or equivalent) in English and/or maths is required.
Level 3	Learners joining this course will be progressing from the level 2 programme	This course is for learners progressing from the level 2 course. A level 2 qualification (or equivalent) in English and/or maths is required.

## CATERING T-LEVELS

Our T Level in Catering prepares you for the profession for two years in our training kitchens, where you'll be accelerating your career prospects and exploring specialist content in readiness for the workplace or higher education.

### T LEVEL CATERING

LEVEL 3  2 YEARS

- ▶ Develop the core knowledge and skills needed to enter a range of catering occupations
- ▶ Your choice of specialist content includes meat, poultry and game, fish and shellfish dishes and products, vegetables, vegan and vegetarian dishes, dough and batter products, paste and patisserie products, hot, cold and frozen desserts, or biscuits, cakes and sponges
- ▶ You'll explore topics in culinary quality, kitchen operations, nutritional analysis, food safety, and business

You could progress to an apprenticeship or employment.

#### RELATED CAREERS

- ▶ Chef

ENTRY REQUIREMENTS*	FROM SCHOOL	FROM COLLEGE
T Level	Five GCSEs at grades 9-4 (including English and maths)	Relevant level 2 qualification at merit grade or higher (to include English and maths at level 2 or higher)

## PATISSERIE

Patisserie involves using the finest ingredients to craft intricately detailed cakes, pastries, and sweet treats. For those looking to pursue a career in this skilled and creative industry, this course provides a focused route and relevant practical skills.

### LEVEL 2 PROFESSIONAL PATISSERIE AND CONFECTIONERY

LEVEL 2  1 YEAR

- ▶ Taught by our industry-experienced pastry chefs, this course involves plenty of practical work producing hot and cold desserts, bread, and cake products
- ▶ Topics covered include healthier foods and special diets, catering operations, costs and menu planning, and producing paste products, biscuit sponge products and fermented products

You could progress to a level 3 qualification, such as our part-time level 3 patisserie and confectionery courses. Other options include apprenticeships or employment.

ENTRY REQUIREMENTS*	FROM SCHOOL	FROM COLLEGE
Level 2	GCSE English and maths at grades 9-4	GCSE English and maths at grades 9-4. You may have progressed from the Level 1 Food and Beverage course, however this is not a requirement.



See online for entry requirements

**FARN-CT.AC.UK /  
APPRENTICESHIPS**

An apprenticeship in catering and hospitality could involve working across a wide variety of businesses. This includes bars, restaurants, cafes, conference centres, banqueting venues, hotels or contract caterers. As a chef you may be monitoring food stocks, preparing food, and have responsibility for areas in a busy kitchen, developing more complex skills and higher responsibilities as your apprenticeship progresses.

- ▶ Commis Chef (Level 2)
- ▶ Hospitality Supervisor (Level 3)
- ▶ Hospitality Management (Level 4)





## DID YOU KNOW?

Experienced Building Services Engineers can earn up to £50,000 a year

We hosted the HIP and SPARKS magazines Learner of the Year competition heats in 2022

COURSES ►►►

# CONSTRUCTION



**T-LEVELS**  
THE NEXT LEVEL QUALIFICATION

The next level qualification - T Levels available in this area

All subjects provide routes into apprenticeships, taking advantage of our great links with local employers

Previous trips have included visits to large-scale development sites and opening ceremonies



## CAREER SPOTLIGHT

The demand for Construction Project Managers in our area is expected to **increase 2.7% by 2025**



## Apprenticeships

Earn as you learn - apprenticeships available in this area

Former students often return to give top tips and advice on progression after college

## CAREERS IN CONSTRUCTION ARE IDEAL FOR THOSE WHO THINK LOGICALLY, ENJOY WORKING WITH THEIR HANDS, AND FEEL PRIDE IN THE WORK THEY CREATE.

The skills you'll learn with us will be put into practice at our Aldershot College campus, home to dedicated workshops and specialist equipment for each trade. You can look forward to learning from lecturers who bring courses to life through their own experiences of working in industry, and the sense of community that comes with being surrounded by different trades.

## INDUSTRY LINKS

We're proud to have connected learners with:

- ▶ **Aspire Defence**
- ▶ **Berkeley Homes**
- ▶ **Christie's Carpentry & Construction**
- ▶ **NRT Construction**
- ▶ **Peninsula Heating and Plumbing**
- ▶ **Wey Developments**

# ADVANCED CONSTRUCTION

Our Advanced Construction T Levels bring together practical topics and the theories that underpin them. They provide a great opportunity to get ahead in the construction industry, equipping you with specialist skills and first-hand workplace experiences.



**BOOST YOUR  
CAREER**

T Levels involve  
a 45-day industry  
placement

## T LEVEL BUILDING SERVICES ENGINEERING

LEVEL 3 2 YEARS

- ▶ Get hands-on with the different tools, technologies and practices used in building services engineering
- ▶ Specialist units available include electrical/electronic equipment engineering, electrotechnical engineering, gas engineering, protection systems engineering, plumbing and heating engineering, heating engineering and ventilation, or refrigeration and air conditioning engineering
- ▶ Provides a route to a broad range of construction career pathways

You could progress to university-level study, an apprenticeship, or employment.

### RELATED CAREERS

- ▶ Building Services Engineer
- ▶ Electrical Engineering Technician
- ▶ Electrician
- ▶ Gas Service Technician
- ▶ Heating And Ventilation Engineer
- ▶ Refrigeration and Air Conditioning Installer
- ▶ Plumber



**DEGREE PASSPORT SCHEME**

## T LEVEL DESIGN SURVEYING AND PLANNING FOR CONSTRUCTION

LEVEL 3 2 YEARS

- ▶ Discover the processes involved in constructing buildings, structures and more; from initial planning to project completion
- ▶ Specialist units available include building services design, civil engineering, hazardous materials, or surveying and design
- ▶ Careers following this T Level could put you at the forefront of exciting construction projects

You could progress to university-level study, an apprenticeship, or employment.

### RELATED CAREERS

- ▶ Civil engineering technician
- ▶ Building Technician
- ▶ Building Control Officer
- ▶ Geospatial Technician
- ▶ Technical Surveyor
- ▶ Town Planning Assistant



**DEGREE PASSPORT SCHEME**

## T LEVEL ONSITE CONSTRUCTION

LEVEL 3 2 YEARS

- ▶ Through this T Level you will develop specialist skills in a trade of your choice, completing practical projects in our dedicated facilities
- ▶ Specialist units available include bricklaying, carpentry and joinery, plastering, or painting and decorating
- ▶ Covers a range of trades that are both hands-on and creative

You could progress to university-level study, an apprenticeship, or employment.

### RELATED CAREERS

- ▶ Bricklayer
- ▶ Carpenter
- ▶ Painter and Decorator
- ▶ Plasterer
- ▶ Shopfitter



**DEGREE PASSPORT SCHEME**

ENTRY REQUIREMENTS*	FROM SCHOOL	FROM COLLEGE
T Level (Level 3)	Five GCSEs at grades 9-4 (including English and maths)	Relevant level 2 qualification at merit grade or higher (to include English and maths at level 2 or higher)



# BRICKLAYING

A career in bricklaying could see you crafting everything from decorative walls to entire houses. What better place to put these skills into practice than our dedicated workshops!

## LEVEL 1 BRICKLAYING

**LEVEL 1 — 1 YEAR**

- ▶ Launch your career by learning the brick and block techniques used in walling, paving and more
- ▶ You'll be prepared with the skills needed to work in the construction environment, as well as gaining the confidence to progress further

You could progress to the level 2 course, an apprenticeship, or employment.

## LEVEL 2 BRICKLAYING

**T LEVEL TRANSITION LEVEL 2 = 1 YEAR**

- ▶ Ideal for those progressing from the level 1 course, build on your existing knowledge by crafting more complex masonry structures
- ▶ You'll complete practical projects around solid walling, piers, cladding, cavity walling and more

You could progress to an apprenticeship, employment or one of our construction T Levels.

### RELATED CAREERS

- ▶ Bricklayer
- ▶ Stonemason

# CARPENTRY

For those looking for a trade that's as creative as it is practical, carpentry will give you the skills to create intricate structures and finely-crafted furniture. With these courses, you'll soon feel confident using different tools and creating work you can be proud of.

## LEVEL 1 CARPENTRY

**LEVEL 1 — 1 YEAR**

- This introductory course will enable you to kick-start your career in carpentry, introducing you to a variety of hand and power tools
- Practical projects include producing woodworking joints, fixing architraves and skirtings, and fitting locks

You could progress to level 2 course, an apprenticeship, or employment.

## LEVEL 2 CARPENTRY

**T LEVEL TRANSITION LEVEL 2 = 1 YEAR**

- Great for those progressing from the level 1 course, take your knowledge further by exploring more advanced tools and structures.
- You'll expand your skillset by learning to craft flooring, roofing, partitions, stairs and more

You could progress to an apprenticeship, employment or one of our construction T Levels.

### RELATED CAREERS

- ▶ Carpenter
- ▶ Furniture Maker
- ▶ Kitchen and Bathroom Fitter

ENTRY REQUIREMENTS*	FROM SCHOOL	FROM COLLEGE
Level 1	Four GCSEs at grades 2 and above (including English and maths)	Entry level 3 qualification in English and maths
Level 2	Five GCSEs at grades 4 and above (including English and maths)	Relevant level 2 qualification at merit grade or higher (to include English and maths at level 2 or higher)

# ELECTRICAL INSTALLATION

Careers in electrical installation are highly skilled, requiring close attention to detail and confidence working with equipment. Kick-start your career by practising hands-on in our electrical workshops, with support from industry-experienced lecturers.



**ANY QUESTIONS?  
GET IN TOUCH**

01252 407040

INFO@FARN-CT.AC.UK

## LEVEL 2 ELECTRICAL INSTALLATION

**LEVEL 2 = 1 YEAR**

- ▶ This course will provide a foundation of knowledge and the technical ability needed to launch your electrical career
- ▶ Studies include principles of electrical science, electrical installations technology, installation of wiring systems and enclosures, and a work placement for a chance to see the industry in action

You could progress to a level 3 qualification, such as Level 3 Electrical Installation, or an apprenticeship. You may also be able to seek employment at junior-level.

## LEVEL 3 ELECTRICAL INSTALLATION

**LEVEL 3 = 1 YEAR**

- ▶ Boost your confidence and take your skills to the next level with this more advanced course
- ▶ Building on your studies at level 2, you'll expand your skillset by learning about environmental technology systems, fault diagnosis, inspection, testing and commissioning, and electrical systems design
- ▶ Learners looking to become a fully qualified electrician will need to complete additional training

You could progress to an apprenticeship, one of our construction T Levels, or employment.

### RELATED CAREERS

- ▶ Building Services Engineer
- ▶ Electrician
- ▶ Electrical Installer

# PLUMBING

Most buildings contain an element of plumbing, meaning there's always a demand for skilled plumbers. Your career could involve installing plumbing systems in new buildings, repairing appliances, supporting clients with emergency requests, and much more.

## LEVEL 1 PLUMBING

**LEVEL 1 = 1 YEAR**

- ▶ Discover the basics of plumbing and technical skills used in industry
- ▶ Through hands-on practical projects, you will learn how to bend and joint copper pipes, connect pipes and fittings to appliances, and work with low carbon steel pipes and fittings

You could progress to a level 2 qualification, such as Level 2 Plumbing, or an apprenticeship. You may also be able to seek employment at junior-level.

## LEVEL 2 PLUMBING

**LEVEL 2 = 1 YEAR**

- ▶ This course will expand on the skills learned at level 1, taking an in-depth look at cold water systems, domestic hot water systems, and sanitation
- ▶ Upon completion you will feel confident to take your new skills into the workplace or study further to specialise in gas and heating

You could progress to an apprenticeship, one of our construction T Levels, or employment.

### RELATED CAREERS

- ▶ Domestic Appliance Service Engineer
- ▶ Gas Service Technician
- ▶ Kitchen and Bathroom Fitter
- ▶ Plumber

ENTRY REQUIREMENTS*	FROM SCHOOL	FROM COLLEGE
Level 1	Four GCSEs at grades 9-3 (including English and maths)	Level 1 qualification in English and maths
Level 2	Four GCSEs at grades 9-4 (including English and maths)	Relevant level 1 qualification (or equivalent) (including English and maths)
Level 3	Five GCSEs at grades 9-4 (including English and maths)	Relevant level 2 qualification at merit grade or higher (to include English and/or maths at level 2 or higher)

\*Good attendance in your previous year is also required. Some courses require a higher grade in a particular subject – see our website for full details. Some related careers may require extra qualifications or experience. Plan your career at [farn-ct.ac.uk/career-zone](http://farn-ct.ac.uk/career-zone).



# Apprenticeships

Construction apprenticeships are a great way of learning a trade, with many learners choosing to complete a college course first to develop their skills and confidence. As a construction apprentice you could be working on a building site. This involves good teamwork, communication skills, and awareness of health and safety.

Your workplace could range from a housing development to a town centre, or even a sports stadium!

- ▶ Bricklayer (Level 2)
- ▶ Gas Engineering Operative (Level 3)
- ▶ Site Carpenter (Level 2)
- ▶ Installation Electrician / Maintenance Electrician (Level 3)
- ▶ Plumbing and Domestic Heating Technician (Level 3)
- ▶ Construction Site Supervisor (Level 4)

**SEE ONLINE  
FOR ENTRY  
REQUIREMENTS**

[farn-ct.ac.uk/apprenticeships](https://farn-ct.ac.uk/apprenticeships)



**FOLLOW US ON  
INSTAGRAM**

[@aldershotconstructioncollege](https://www.instagram.com/aldershotconstructioncollege)





Learners on our fashion courses have helped backstage at London Fashion Week and Top Model

COURSES ►►

# CREATIVE STUDIES



**T-LEVELS**  
THE NEXT LEVEL QUALIFICATION

The next level qualification - T Levels available in this area



**DID YOU KNOW?**

Demand for Artists, Graphic Designers, Photographers and Clothing Designers is predicted to **increase by 2025**

You'll have opportunities to produce work for real clients

Lucy - Level 3 Art and Design "I was honoured to have my design chosen by Princes Mead Shopping Centre for their new mural. It gave me a huge boost in my creative self-confidence!"



We regularly host guest speakers, from renowned photographer Rankin to children's book illustrator Maggie Li



## CAREER SPOTLIGHT

The national average salary for Artists is £35,880



We host an annual portrait competition with guest-sitter



## DESIGN SHOP

Our creative students run an on-campus shop selling their own designs on t-shirts, badges and much more

## GET READY TO EXPRESS YOUR STYLE, EXPAND YOUR ARTISTIC SKILLSET, AND BRING YOUR IDEAS TO LIFE IN OUR RANGE OF CREATIVE STUDIOS.

With their own dedicated area on campus, our creative courses will surround you with inspiration and learners who share your passion for artistry. Facilities include a photography studio, darkroom, fashion studio, art studio, graphic design suites and more - giving you plenty of resources to turn creative concepts into impressive artwork.

## INDUSTRY LINKS

We're proud to have connected learners with:

- ▶ Fashion London
- ▶ Flourish Design
- ▶ John Lewis Magazine
- ▶ New Ashgate Gallery
- ▶ Ouno Creative
- ▶ Pinewood Studios
- ▶ Rankin Agency
- ▶ Top Model UK



**STAY AT FARNBOROUGH FOR YOUR DEGREE!**

See page 32

# ART

Begin your creative career with us! Our art courses provide the opportunity to explore different styles, mediums, and creative briefs, so that you're equipped with a wide skillset and a strong portfolio. Learners host and take part in exhibitions throughout the year, providing plenty of opportunities to share your work with the world.



**START THIS  
SEPTEMBER**  
APPLY ONLINE NOW  
AT [FARN-CT.AC.UK](http://FARN-CT.AC.UK)

## LEVEL 3 ART

LEVEL 3 ≡ 2 YEARS

- ▶ This creative programme will help you to develop a range of artistic skills to take into further study or your career
- ▶ You'll explore topics in interior design, illustration, observational drawing, printmaking, digital design, painting; creating a portfolio of work along the way
- ▶ You can look forward to producing works for real clients during your studies, which has previously included the NHS, Armed Forces and local businesses

You could progress to university-level study, an apprenticeship, or employment.

**Stay for a degree at Farnborough – see P32**

### RELATED CAREERS

- ▶ Animator
- ▶ Commercial Artist
- ▶ Gallery Curator
- ▶ Fine Artist
- ▶ Illustrator



**DEGREE PASSPORT SCHEME**

## LEVEL 2 ART AND DESIGN

T LEVEL TRANSITION LEVEL 2 ≡ 1 YEAR

- ▶ Ideal for learners wanting to explore the different creative disciplines available and build a portfolio of work
- ▶ You'll have a chance to learn about art and design history, fine art, graphics, photography, and textiles, helping you to feel confident in progressing to the next level and choosing a subject to specialise in

You could progress to a level 3 qualification, in subjects such as art, graphic design, fashion and textiles, photography, or our T Level in Craft and Design.

# CRAFT AND DESIGN T-LEVELS

This new T Level provides an exciting opportunity to learn specialist design skills and focus your studies towards a specific craft-based profession. As well as your choice of specialist pathway to follow in your second year, you'll develop a foundation of key skills needed for careers in this creative sector.

## T LEVEL CRAFT AND DESIGN

LEVEL 3 ≡ 2 YEARS

- ▶ You'll take an in-depth look at issues relevant to the craft and design sector, including audience and consumer needs, the creative economy, and cultural context
- ▶ Your choice of specialist content includes jewellery maker and ceramics maker.
- ▶ Thanks to hands-on practical projects and a 45-day work placement, you'll be equipped with valuable skills in research, project methodology, and professional conduct

You could progress to university-level study, an apprenticeship, or employment.

**Stay for a degree at Farnborough – see P32**

### RELATED CAREERS

- ▶ Ceramic Artist
- ▶ Ceramics Designer/Maker
- ▶ Jewellery Designer/Maker



**DEGREE PASSPORT SCHEME**

ENTRY REQUIREMENTS*	FROM SCHOOL	FROM COLLEGE
Level 3/T Level	Five GCSEs at grades 9-4 (to include English, a creative subject, and preferably maths)	Relevant level 2 qualification at merit grade or higher (to include English, and preferably maths, at level 2 or higher)
Level 2	Four GCSEs at grades 9-3 (to include English, maths, and art)	Relevant level 1 qualification (to include English and maths at level 1 or higher) and successful portfolio

\*Good attendance in your previous year is also required. Some courses require a higher grade in a particular subject – see our website for full details. Some related careers may require extra qualifications or experience. Plan your career at [farn-ct.ac.uk/career-zone](http://farn-ct.ac.uk/career-zone).



# GRAPHIC DESIGN

Graphic design professionals have an eye for detail and can turn texts and concepts into functional, creative designs. Your future career could involve designing prints, products, websites, and even large-scale advertisements. By the end of the course, you'll have built a portfolio showing off the best of your creative abilities.

## LEVEL 3 GRAPHIC DESIGN

LEVEL 3  2 YEARS

- ▶ Develop skills using traditional graphic design methods, graphics tablets, and the latest Adobe design software
- ▶ Creative projects will see you learning about typography and layouts, graphic design for print and web, drawing development, branding, and advertising design
- ▶ Our industry-experienced lecturers will provide insight into opportunities available in the commercial graphic design sector, preparing you for an exciting career or further study at university-level

You could progress to university-level study, an apprenticeship, or employment.

**Stay for a degree at Farnborough – see P32**

### RELATED CAREERS

- ▶ Brand Designer
- ▶ Commercial Illustrator
- ▶ Graphic Designer
- ▶ Marketing Executive
- ▶ Website Designer

 **DEGREE PASSPORT SCHEME**

ENTRY REQUIREMENTS*	FROM SCHOOL	FROM COLLEGE
Level 3	Five GCSEs at grades 9-4 (to include English, a creative subject, and preferably maths)	Relevant level 2 qualification at merit grade or higher (to include English, and preferably maths, at level 2 or higher)



# FASHION

From learning innovative textiles techniques to exploring fashion history and the latest trends, this course will see you bringing your design ideas to life in our dedicated studio. Your studies will be enriched with trips and guest talks, as well as opportunities to get involved backstage at Top Model and London Fashion Week events.



USE OUR  
CAREER TOOLS  
AT [FARN-CT.AC.UK](http://farn-ct.ac.uk)

## LEVEL 3 FASHION, TEXTILES AND VISUAL MERCHANDISING

LEVEL 3 ≡ 2 YEARS

- ▶ This exciting course will see you crafting your own textile designs and exhibiting your work at our annual fashion show
- ▶ You'll develop an in-depth understanding of fashion and textile design, exploring topics in fashion illustration, garment construction, pattern cutting, photography and styling, surface design, and visual merchandising
- ▶ There'll be plenty of opportunities to express your own creative style, as well as the chance to collaborate with other courses for fashion photoshoots and creative exhibits



You could progress to university-level study, an apprenticeship, or employment.

**RELATED CAREERS**

- ▶ Dressmaker
- ▶ Fashion Designer
- ▶ Fashion Journalist
- ▶ Pattern Cutter
- ▶ Tailor



DEGREE PASSPORT SCHEME

# PHOTOGRAPHY

With our very own photography studio, darkroom facility, large format printers, and a selection of digital equipment, where better to express your creativity than Farnborough? Our industry-experienced lecturers will provide insight into this creative and competitive industry, enhancing your studies through their own experiences.

## LEVEL 3 PHOTOGRAPHY

LEVEL 3 ≡ 2 YEARS

- ▶ Get ready for a comprehensive introduction to photography, with opportunities to work hands-on with cameras, studio lighting, and Adobe editing software
- ▶ You'll explore a range of styles and approaches, including studio photography, location techniques, digital imaging and post-production, experimental techniques, and professional, art and commercial practices
- ▶ Throughout your studies you'll build a portfolio of work to support your progression into a creative career or university-level study



You could progress to university-level study, an apprenticeship, or employment.

**Stay for a degree at Farnborough – see P32**

**RELATED CAREERS**

- ▶ Advertising Photographer
- ▶ Editorial Photographer
- ▶ Photojournalist
- ▶ Digital Re-toucher
- ▶ Photography Assistant



DEGREE PASSPORT SCHEME

ENTRY REQUIREMENTS*	FROM SCHOOL	FROM COLLEGE
Level 3	Five GCSEs at grades 9-4 (to include English, a creative subject, and preferably maths)	Relevant level 2 qualification at merit grade or higher (to include English, and preferably maths, at level 2 or higher)

\*Good attendance in your previous year is also required. Some courses require a higher grade in a particular subject – see our website for full details. Some related careers may require extra qualifications or experience. Plan your career at [farn-ct.ac.uk/career-zone](http://farn-ct.ac.uk/career-zone).



**SUCCESS IN THE MAKING****LUCY****ART AND DESIGN**

NOW STARTING A DEGREE IN  
ILLUSTRATION AT THE UNIVERSITY  
OF NORTHAMPTON

"I have been able to explore a range of other subjects within my course and enjoyed being able to do a bit of everything with the huge amount of facilities available. The extracurricular opportunities provided to us have been really great and inspiring especially with insight from industry professionals. I look forward to continuing my studies in Northampton, studying Illustration."

"I AM DOING MORE THAN I THOUGHT  
I WOULD BE AS I GET TO EXPLORE A  
RANGE OF OTHER SUBJECTS WITHIN  
MY COURSE"



We've invested in cutting-edge equipment, including virtual reality headsets, holographic imaging, and robotics

COURSES ►►

# DIGITAL (IT)



**NEW  
ESPORTS  
COURSE**

Find out more on page 86!



**DID YOU  
KNOW?**

By 2025, it is predicted there will be a 2.6% increase in demand for Programmers and Software Development Professionals

Previous trips have included the National Museum of Computing and a 'behind the scenes' IT tour of Thorpe Park



**Apprenticeships**

Earn as you learn - apprenticeships available in this area



We host regular guest talks from employers and industry professionals



## CAREER SPOTLIGHT

IT Business Analysts, Architects and Systems Designers in our area **earn an average salary of £59,800**

**THERE'S A REASON 'TECHNOLOGY' IS IN OUR NAME - WE'RE PASSIONATE ABOUT THE LATEST TECH AND ALL THE INNOVATION THAT IT BRINGS.**

At Farnborough, you'll have access to fresh digital facilities and support from lecturers with excellent industry insight and connections. You'll develop a range of skills that can help take you far, whether you're interested in tuning-up computer hardware, coding the next best app, or supporting others with their technical needs.

## INDUSTRY LINKS

We're proud to have connected learners with:

- ▶ **BAE Systems**
- ▶ **Blucando**
- ▶ **iRed**
- ▶ **GlobalStep**
- ▶ **Hewlett Packard**



Students often stay with us for a degree at University Centre Farnborough

Gianni - IT Graduate "I loved the course, the people in it, and the lecturers"



## T-LEVELS

THE NEXT LEVEL QUALIFICATION

The next level qualification - T Levels available in this area



**STAY AT FARNBOROUGH FOR YOUR DEGREE!**

See page 32

## DIGITAL T-LEVELS

Get a head-start in your career with one of our digital (IT) T Levels. With three pathways to choose from, you'll have the chance to pick a route that suits your interests and will prepare you for the career you aspire to. In your first year, you'll learn the core knowledge needed for jobs in digital industries, studying specialist content in your second year to focus your skills.



**BOOST YOUR  
CAREER**

T Levels involve  
a 45-day industry  
placement

### T LEVEL DIGITAL BUSINESS SERVICES

LEVEL 3 ≡ 2 YEARS

- ▶ Develop the core knowledge and skills needed to enter a range of digital and business occupations
- ▶ The specialist content of this course means you will develop the knowledge and skills of a data technician
- ▶ You'll explore topics around software design, how digital technologies impact business and market environments, internet security, testing software, hardware and data, and planning digital projects

You could progress to university-level study, an apprenticeship, or employment.

**Stay for a degree at Farnborough – see P32**

#### RELATED CAREERS

- ▶ Cyber Security Technician
- ▶ Data Analyst
- ▶ Digital Content Specialist



**DEGREE PASSPORT SCHEME**

### T LEVEL DIGITAL PRODUCTION, DESIGN AND DEVELOPMENT

LEVEL 3 ≡ 2 YEARS

- ▶ For digital creatives, this T Level will give you the hands-on experience needed to kick-start an exciting career where your ideas can be brought to life through technology
- ▶ All areas of technology are explored as you'll uncover how software, hardware, and data come into play when creating modern user experiences
- ▶ Your studies will include designing, implementing and testing software, emerging digital trends such as augmented reality and 3D printing, using data in software design, digital environments and working collaboratively in a digital team

You could progress to university-level study, an apprenticeship, or employment.

**Stay for a degree at Farnborough – see P32**

#### RELATED CAREERS

- ▶ Computer Games Developer
- ▶ Digital Marketer
- ▶ IT Business Analyst
- ▶ Software Developer
- ▶ Web Developer



**DEGREE PASSPORT SCHEME**

### T LEVEL DIGITAL SUPPORT SERVICES

LEVEL 3 ≡ 2 YEARS

- ▶ This T Level will equip you with the hands-on skills required to install and support IT systems
- ▶ Your choice of specialist content includes digital infrastructure, network cabling, unified communications, or digital support
- ▶ Topics in software, hardware, networking and new technologies are covered to give you a broad range of skills, as well as confidence in communicating technical language with others

You could progress to university-level study, an apprenticeship, or employment.

**Stay for a degree at Farnborough – see P32**

#### RELATED CAREERS

- ▶ First/Second Line Support
- ▶ Helpdesk Technician
- ▶ Infrastructure Technician
- ▶ Network Support Technician



**DEGREE PASSPORT SCHEME**

ENTRY REQUIREMENTS*	FROM SCHOOL	FROM COLLEGE
T Level	Five GCSEs at grades 9-4 (including English and maths)	Relevant level 2 qualification at merit grade or higher (to include English and maths at level 2 or higher)



# IT

For problem solvers with an interest in technology, a qualification in IT could help you to launch an exciting and fulfilling career. These courses can lead to further study or job roles focused around hardware, software, technical support, or game development.

## LEVEL 3 IT

LEVEL 3  2 YEARS

- ▶ This course gives you a broad knowledge of the IT industry
- ▶ The transferable skills you'll be learning can lead to you starting a career with various types of employers
- ▶ You'll be covering technical skills that cover networking and systems architecture, programming, and website design
- ▶ Key skills in communication and employability will be developed alongside the current trends in the sector

You could progress to university-level study, an apprenticeship, or employment.

**Stay for a degree at Farnborough – see P32**

### RELATED CAREERS



- ▶ Hardware and Network Support
- ▶ Network Engineering
- ▶ Programmer
- ▶ Software Engineer



### DEGREE PASSPORT SCHEME

You could progress to a level 3 qualification, such as a Digital T Level, Level 3 Esports, Level 3 Game Development, or an apprenticeship. You may also be able to seek employment at junior-level.

## LEVEL 2 ICT

 T LEVEL TRANSITION LEVEL 2  1 YEAR

- ▶ Ideal for learners progressing from a relevant level 1 course and those looking for a route to level 3, this creative technology programme is filled with modern topics to take your interests further
- ▶ Your studies will include hardware and software components, programming, app development, and multimedia, equipping you with technical skills along the way

You could progress to a level 2 qualification, such as Level 2 ICT, or an apprenticeship.

## LEVEL 1 IT AND VOCATIONAL SKILLS

LEVEL 1  1 YEAR

- ▶ Our level 1 course provides a great introduction to the IT industry, from creative elements like web design, to technical elements in coding
- ▶ After this programme you'll feel more confident progressing to the next level, with skills in creating a website, IT fundamentals, creating a spreadsheet to solve problems, and study skills including organisation and working in teams
- ▶ This course includes preparation for employment, study at level 2, transferable skills, and work experience.

ENTRY REQUIREMENTS*	FROM SCHOOL	FROM COLLEGE
Level 3	Five GCSEs at grades 9-4 (including English and maths)	Relevant level 2 qualification at merit grade or higher (to include English and/or maths at level 2 or higher)
Level 2	Four GCSEs at grades 9-3 (including English and maths)	Relevant level 1 qualification (to include English and maths at level 1 or higher)
Level 1	Three GCSEs at grades 9-2 (including English and maths)	Entry level 3 qualification in English and maths



The digital sector is ever-expanding, making it a great time to transfer your digital skills into the workplace. You can find digital positions in all different types of businesses, in both the private and public sector.

- ▶ Information Communications Technician (Level 3)
- ▶ IT Solutions Technician (Level 3)
- ▶ Network Engineer (Level 4)



Previous guest speakers have included Airbus and McLaren



**T-LEVELS**  
THE NEXT LEVEL QUALIFICATION

The next level qualification -  
T Levels available in this area


COURSES ►►

# ENGINEERING AND MOTOR VEHICLE MAINTENANCE



**DID YOU  
KNOW?**

Demand for Design and  
Development Engineers is  
expected to **increase**  
2.6% by 2025



We recently  
invested in a  
Cessna 172 aircraft  
to bring topics in  
aeronautical  
engineering to life



Students often stay with us for a degree at University Centre Farnborough

Harry - Studying HNC Aeronautical Engineering "I enjoyed studying the college course in my previous two years here and so stayed on at University Centre Farnborough"



## CAREER SPOTLIGHT

Experienced Aerospace Engineers can earn a salary of up to £52,000 per year



You'll complete plenty of practical projects in our Aerospace and Automotive Academy and suite of engineering workshops

A



## Apprenticeships

Earn as you learn - apprenticeships available in this area

**FOR THOSE WHO ARE PASSIONATE ABOUT VEHICLE TECHNOLOGY OR SEEK TO BE AT THE FOREFRONT OF ENGINEERING INNOVATION, OUR COURSES CAN HELP YOU TO LAUNCH AN EXCITING, HANDS-ON CAREER.**

At Farnborough, you'll have access to modern equipment and technologies that replicate those used in the working environment - including our fully equipped garage and specialist engineering facilities. With insight from industry-experienced lecturers, you'll soon feel confident using specialist tools and developing the skills employers in this industry are looking for.

## INDUSTRY LINKS

We're proud to have connected learners with:

- ▶ Gulfstream
- ▶ McLaren
- ▶ TAG Farnborough Airport
- ▶ Mercedes
- ▶ Lumen
- ▶ Gama Aviation



**UNIVERSITY CENTRE  
FARNBOROUGH**

**STAY AT FARNBOROUGH  
FOR YOUR DEGREE!**

See page 32



# ENGINEERING AND MANUFACTURING T-LEVELS

Kick-start your career with a T Level in engineering and manufacturing. Thanks to the 45-day industry placement included, you'll develop relevant practical skills and gain valuable experience for your CV. Core industry knowledge is covered in the first year, with the chance to choose which specialist content you'd like to study in the second year.



**BOOST YOUR  
CAREER**

T Levels involve  
a 45-day industry  
placement

## T LEVEL DESIGN AND DEVELOPMENT FOR ENGINEERING AND MANUFACTURING

LEVEL 3 ≡ 2 YEARS

- ▶ Ideal for problem solvers with a creative mindset, discover the steps involved in engineering design
- ▶ Your choice of specialist content includes mechanical engineering, electrical and electronic engineering, control and instrumentation engineering, or structural engineering
- ▶ You'll develop a core understanding of the elements that influence design processes and manufacturing techniques, as well as wider factors to be considered when completing projects

## T LEVEL ENGINEERING, MANUFACTURING, PROCESSING AND CONTROL

LEVEL 3 ≡ 2 YEARS

- ▶ If you're fascinated by how things are made, this T Level explores the tools, techniques and practices used in engineering manufacturing
- ▶ Your choice of specialist content includes production technologies, manufacturing technologies, processing technologies, or materials technologies
- ▶ As well as a detailed overview of the engineering and manufacturing sectors, you'll explore topics around materials testing, quality and management, and the mathematics behind successful manufacturing

## T LEVEL MAINTENANCE, INSTALLATION AND REPAIR FOR ENGINEERING AND MANUFACTURING

LEVEL 3 ≡ 2 YEARS

- ▶ Discover how various equipment is maintained and repaired, with the option to specialise in engineering or motor vehicle disciplines
- ▶ Your choice of specialist content includes maintenance engineering technologies: mechanical, mechatronic, electrical and electronic, control and instrumentation, or maintenance, installation and repair: light and electric vehicles
- ▶ This T Level will give you a range of skills needed by employers with high standards for quality control. This includes fault detection and diagnosis, isolation and resolution methods, and communication skills for the sector.

You could progress to university-level study, an apprenticeship, or employment.

**Stay for a degree at Farnborough – see P32**

### RELATED CAREERS

- ▶ 3D Printing Technician
- ▶ CAD Technician
- ▶ Engineering Design and Draughtsperson
- ▶ Manufacturing Design Engineer
- ▶ Mechanical Design Engineer



**DEGREE PASSPORT SCHEME**

You could progress to university-level study, an apprenticeship, or employment.

**Stay for a degree at Farnborough – see P32**

### RELATED CAREERS

- ▶ Aerospace Engineering Technician
- ▶ Electrical Engineering Technician
- ▶ Materials Technician
- ▶ Mechanical Engineering Technician
- ▶ Welder



**DEGREE PASSPORT SCHEME**

You could progress to university-level study, an apprenticeship, or employment.

**Stay for a degree at Farnborough – see P32**

### RELATED CAREERS

- ▶ Auto-Electrician
- ▶ Engineering Maintenance Technician
- ▶ Motor Mechanic
- ▶ Vehicle Body Repairer
- ▶ Wind Turbine Technician



**DEGREE PASSPORT SCHEME**

ENTRY REQUIREMENTS*	FROM SCHOOL	FROM COLLEGE
T Level	Five GCSEs at grades 9-4 (including English and maths)	Relevant level 2 qualification at merit grade or higher (to include English and maths at level 2 or higher)

# ENGINEERING

Engineering roles are suited to logical thinkers who are fascinated by how things are made and the way that they work. Our level 2 and 3 courses are assessed largely through coursework and practical assignments in our modern workshops, with the option to study general engineering or focus on aviation.

## LEVEL 3 AERONAUTICAL ENGINEERING

**LEVEL 3**  **2 YEARS**

- ▶ This course is ideal for learners who are fascinated by the engineering behind planes and flight
- ▶ Through practical projects and assignments, you'll learn about the principles and applications of aircraft mechanical science, the theory of flight, and mathematics for engineering
- ▶ Many subjects are taught hands-on using our workshops and Cessna 172 aircraft, giving you valuable skills to take into your career

You could progress to university-level study, an apprenticeship, or employment at technician-level.

**Stay for a degree at Farnborough – see P32**

### RELATED CAREERS

- ▶ Aerospace Engineer
- ▶ Aircraft Maintenance Technician
- ▶ Electronics Engineer



**DEGREE PASSPORT SCHEME**

## LEVEL 3 ENGINEERING

**LEVEL 3**  **2 YEARS**

- ▶ Designed with employers in-mind, this course will prepare you for your career in a range of engineering fields
- ▶ Topics covered include electrical and electronic principles, mechanical principles and applications, engineering design, and computer aided drafting
- ▶ Thanks to the wide range of disciplines covered, your progression pathways are kept open, with the option to specialise in a particular engineering field through an apprenticeship or university-level course

You could progress to university-level study, an apprenticeship, or employment at technician-level.

**Stay for a degree at Farnborough – see P32**


### RELATED CAREERS

- ▶ Engineering Technician
- ▶ Design and Development Engineer
- ▶ Mechanical Engineer



**DEGREE PASSPORT SCHEME**

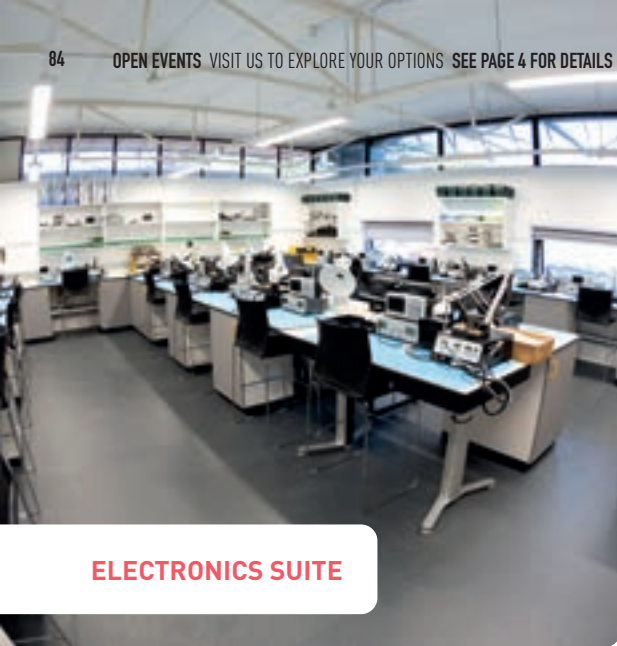
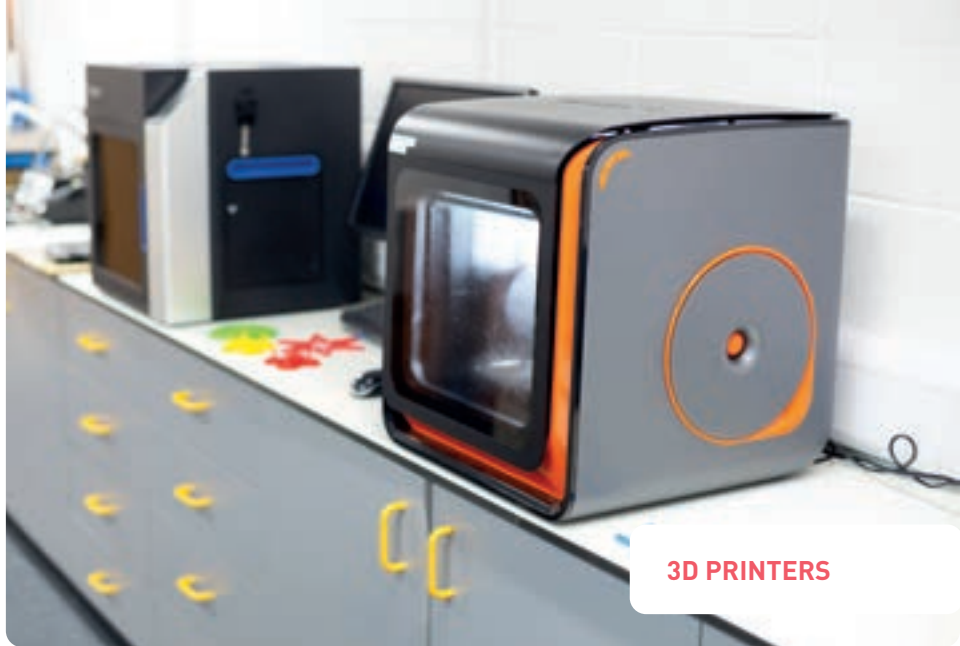
## LEVEL 2 ENGINEERING

**T LEVEL TRANSITION LEVEL 2**  **1 YEAR**

- ▶ Discover a route to level 3 study while developing transferable skills relevant to the aviation, automotive, civil defence, and other engineering sectors
- ▶ You'll be introduced to communications for engineering, engineering materials, machining and fabrication techniques, and maths for engineering

You could progress to a level 3 qualification, such as one of our Engineering and Manufacturing T Levels, Level 3 Aeronautical Engineering, Level 3 Engineering, or an apprenticeship. You may also be able to seek employment at junior-level.

ENTRY REQUIREMENTS*	FROM SCHOOL	FROM COLLEGE
Level 3	Five GCSEs at grades 9-4 (including English and maths)	Relevant level 2 qualification at merit grade or higher (to include English and/or maths at level 2 or higher)
Level 2	Four GCSEs at grades 9-3 (including English and maths)	Relevant level 1 qualification (to include English and maths at level 1 or higher)

**ELECTRONICS SUITE****3D PRINTERS****COMPOSITES CENTRE****NEW  
FACILITIES**

We have invested in our engineering department to give you an even greater learning experience

**AEROSPACE MAINTENANCE SUITE****ENGINEERING PC SUITE**



# MOTOR VEHICLE MAINTENANCE

Careers in the motor vehicle industry are perfect for those who are good at problem-solving, enjoy working with their hands, and are driven by automotive innovation. With the development of electric vehicles and new technologies, now is an exciting time to join this hands-on sector.

## LEVEL 1 TRANSPORT MAINTENANCE

LEVEL 1 — 1 YEAR

- ▶ This course is ideal if you want to start learning about the maintenance of vehicles and the exciting range of automotive careers available
- ▶ Training using modern tools and working on real cars in our workshop, you'll learn about engines, transmission, gearboxes, chassis, steering, suspension, brakes, wheels, tyres, and electrics, as well as how to work safely with vehicles

You could progress to a level 2 qualification, such as Level 2 Vehicle Maintenance and Repair, or an apprenticeship.

## LEVEL 2 VEHICLE MAINTENANCE AND REPAIR

T LEVEL TRANSITION LEVEL 2 = 1 YEAR

- ▶ Build on your existing knowledge and skills from level 1 to take on more complex automotive tasks
- ▶ With plenty of practical work to bring theory to life, you'll finish this course feeling confident and ready to start work. You'll be able to replace engine units and components, repair electrical and electronic units, disassemble and reassemble core parts of the chassis, work on steering and suspension components, and carry out servicing

You could progress to a level 3 qualification, such as our T Level or an apprenticeship. You will also be able to apply for work in the industry as a vehicle technician.

### RELATED CAREERS

- ▶ Garage Manager
- ▶ Motor Mechanic
- ▶ Vehicle Electrician
- ▶ Vehicle and Parts Salesperson
- ▶ Vehicle Technician

ENTRY REQUIREMENTS*	FROM SCHOOL	FROM COLLEGE
Level 1	Four GCSEs at grades 9-2 (including English Language and maths)	Functional skills level 1 qualification in English and maths
Level 2	Four GCSEs at grades 9-3 (including English and maths)	Relevant level 1 qualification (to include English language and maths at functional skills level 2 or higher)



All kinds of careers could open up to you with an engineering or motor vehicle apprenticeship. Your enquiring mind, technical skills and ability to solve problems will help you to carve a career that suits your interests and skills.

See online for entry requirements

**FARN-CT.AC.UK /  
APPRENTICESHIPS**

## ENGINEERING

- ▶ Supply Chain Warehouse Operative (Level 2)
- ▶ Engineering Operative (Level 2)
- ▶ Composite Technician (Level 3)
- ▶ Engineering Technician (Level 3)
- ▶ Engineering Technician – Aircraft Maintenance Fitter (Level 3)
- ▶ Engineering Fitter (Level 3)
- ▶ International Freight Forwarding Specialist (Level 3)
- ▶ Science Manufacturing Technician (Level 3)
- ▶ Transport and Warehouse Operations Supervisor (Level 3)
- ▶ Automation and Controls Engineering Technician (Level 4)
- ▶ Engineering Manufacturing Technician (Level 4)

- ▶ Embedded Electronic Systems Design and Development Engineer Degree Apprenticeship (Level 6)
- ▶ Manufacturing Engineer Degree Apprenticeship (Level 6)

## MOTOR VEHICLE

- ▶ Autocare Technician (Level 2)
- ▶ Motor Vehicle Service and Maintenance Technician (Light Vehicle) (Level 3)



## DID YOU KNOW?

Esports careers are on the rise! There are **more roles than ever now**, ranging from Pro Gamer to Marketing

Facilities include a modern game lab with the latest in computer hardware, virtual reality equipment, and streaming technology

COURSES ►►

# ESPORTS AND GAMES

PART OF FARNBOROUGH GAME STUDIO

You can join our gaming enrichment team, who have achieved success in the British Esports Student Championship





Taught as part of  
our new  
Farnborough Game  
Studio suite of  
courses

## DO YOU FIND YOURSELF FASCINATED BY THE WORLD OF GAMING AND COMPETITIVE ESPORTS? TAKE YOUR INTEREST TO THE NEXT LEVEL FOR A PATHWAY TO A RANGE OF INTERESTING CAREERS.

Whether you see yourself coding and designing games, organising high-profile competitive gaming tournaments, or managing the digital streaming and broadcasting of events, our courses explore a wide range of topics and skills to keep your options in this expanding industry open.

### INDUSTRY LINKS

We're proud to have connected learners with:

- **Overworld Studios**
- **nDreams**



**STAY AT FARNBOROUGH  
FOR YOUR DEGREE!**

See page 32



### CAREER SPOTLIGHT

Experienced Computer Game  
Developers can **earn a salary**  
of up to **£70,000 a year**



# ESPORTS

Esports tournaments are competitive gaming events, where professional gamers compete for prizes and entertain spectators. This exciting area of study brings together elements of business, event management, game development, IT, media production, and sport, providing a wide mix of skills and a route to plenty of pathways in this high-profile industry.



## LEVEL 3 ESPORTS

LEVEL 3 ≡ 2 YEARS

- ▶ This course takes a detailed look into the esports industry, providing an understanding of what goes into organising gaming tournaments and online events
- ▶ Studies include esports events, coaching, nutrition for esports performance, game design, live-streamed broadcasting, immersive customer experience, and tournament organisation
- ▶ You'll be encouraged to complete a work experience placement during your time on the course to help boost your skills and CV



You could progress to university-level study, an apprenticeship, or employment.

**Stay for a degree at Farnborough – see P32**

### RELATED CAREERS

- ▶ Esports Broadcast Director
- ▶ Esports Coach
- ▶ Event Manager
- ▶ Marketing and Promotions
- ▶ Social Media Executive

 **DEGREE PASSPORT SCHEME**

# GAME DEVELOPMENT

Using high-spec computers, drawing tablets, and modern game engine software, this course will see you designing immersive gaming experiences while learning technical skills in coding and programming. You'll have opportunities to bring your ideas to life with support from industry-experienced lecturers, developing playable games, and a bank of your own creative assets.

## LEVEL 3 GAME DEVELOPMENT

LEVEL 2 ≡ 2 YEARS

- ▶ Ideal for those who are both creative and technically-minded, this course will provide you with the skills needed to launch your career in game design and development
- ▶ You'll have opportunities to create your own websites and digital games and apps, while developing skills in 2D/3D animation, game engines, games testing, and concept art for computer games
- ▶ Projects are hands-on and allow you to bring your own style and creative approach to your studies
- ▶ You'll research industry standards, such as target audience, current trends, and employability



You could progress to university-level study, an apprenticeship, or employment.

**Stay for a degree at Farnborough – see P32**

### RELATED CAREERS

- ▶ Animator
- ▶ Computer Games Developer
- ▶ Game Artist
- ▶ Games Designer
- ▶ Software Developer

 **DEGREE PASSPORT SCHEME**

ENTRY REQUIREMENTS*	FROM SCHOOL	FROM COLLEGE
Level 3	Five GCSEs at grades 9-4 (including English and maths)	Relevant level 2 qualification at merit grade or higher (to include English and maths at level 2 or higher)

\*Good attendance in your previous year is also required. Some courses require a higher grade in a particular subject – see our website for full details. Some related careers may require extra qualifications or experience. Plan your career at [farn-ct.ac.uk/career-zone](http://farn-ct.ac.uk/career-zone).



OUR NEW ESPORTS CENTRE




ENGLISH  
PHONEMES

Our lecturers are  
friendly and  
supportive

COURSES >>>

# ENGLISH FOR SPEAKERS OF OTHER LANGUAGES



You will make  
friends and learn  
new skills, helping  
to boost your  
confidence



## WE OFFER A FULL-TIME ESOL PROGRAMME SUITABLE FOR YOUNG PEOPLE WHO SPEAK ENGLISH AS A SECOND OR OTHER LANGUAGE.

The programme is suited to you if you are aged 16-18 years old, are from another country, and need to improve your English to progress to further study or find a job. Your studies will last one year and the programme is suitable if your level of English ranges between beginner/basic level (entry 1) and level 1-2 (upper intermediate).

### ESOL

#### 1 YEAR

What you will study will depend on your level of English on entering the College – we will discuss your options with you:

- ▶ ESOL at level 1, level 2, or entry 1-3
- ▶ Information Technology
- ▶ Maths
- ▶ Work Placement
- ▶ Tutorial

Learners can also choose vocational subjects, for example:

- ▶ Hair and Beauty
- ▶ Catering
- ▶ Motor Vehicle Engineering
- ▶ Health and Social care
- ▶ Media and Performing Arts

Successful completion of the entry 3 ESOL programme means you could start a wide range of vocational or academic programmes, to take your new skills further. Some learners also start paid jobs.


#### ENTRY REQUIREMENTS\*

##### ESOL

You will need to complete an interview and English test in advance so that we can check your level of language. You must be able to speak, write, read, and understand basic sentences, and be confident in reading and writing the Roman alphabet.







You'll complete a work placement in a commercial florist

COURSES >>>



**DID YOU KNOW?**

42% of Horticultural Trade vacancies are due to a skills shortage

# FLORISTRY

# AND

# HORTICULTURE



You'll be helping to run a real floristry studio, selling arrangements to members of the public

Our flower suppliers are the same as those used by high street florists



## TRANSFORM FRESH FLOWERS INTO VIBRANT DISPLAYS WITH SUPPORT FROM OUR EXPERIENCED LECTURERS.

We'll teach you to tend to plants and create a diverse range of floral designs - from intricate corsages to extravagant displays for events. Studying in our purpose-built Floristry Design Studio, you'll feel right at home surrounded by flowers, shrubs, and all the tools you need to express your creativity.

### INDUSTRY LINKS

We're proud to have connected learners with:

- ▶ **Fleurametz**
- ▶ **Heckfield Place**
- ▶ **Longacres**

Former learner Steph went on to take part in Netflix's The Big Flower Fight 2020

"At Farnborough I learned the basics and found my love of flowers. I loved every minute of doing the Big Flower Fight and after taking part felt it was the right time to open my own business."





# FLORISTRY AND HORTICULTURE

Careers in floristry could involve working in a range of settings, from independent shops to large outdoor events. You'll be required to use delicate hands-on skills and have a great knowledge of flowers, trends and design styles – all things you'll hone in our well-stocked studio.



## LEVEL 1 PRACTICAL HORTICULTURE SKILLS

LEVEL 1 — 1 YEAR

- ▶ This course is ideal for those who would like to learn to grow plants for small gardens, allotments or larger pieces of land
- ▶ Topics covered include preparing ground for sowing and planting, caring for planted areas, sowing seeds, and maintaining hand tools, giving you plenty of practical skills to launch your career or progress to further study



With a merit grade or higher, you could progress to a level 2 qualification, such as Level 2 Floristry. Other options include apprenticeships or employment at junior-level.

## LEVEL 2 FLORISTRY

LEVEL 2 = 1 YEAR

- ▶ For those looking to launch a creative career and learners progressing from level 1, this course will introduce you to the practical skills and techniques used in floristry
- ▶ Learning hands-on in our design studio, you'll discover practical floristry styles from around the world, shop display, event decoration, techniques for caring and conditioning fresh flowers and foliage, how to cost materials, and retailing



You could progress to a level 3 qualification, such as Level 3 Floristry. Other options include apprenticeships or employment at junior-level.

## LEVEL 3 FLORISTRY

LEVEL 3 ≡ 1 YEAR

- ▶ Build on your existing floristry knowledge and expand your skillset with this more advanced course
- ▶ You'll explore trends in floristry, diverse floral designs, event organising and decoration, practical floristry, and theoretical floristry
- ▶ By the end of this course, you'll feel confident working with different flowers and communicating with customers, and feel ready to enter the workplace with your polished skills



You could progress to a higher-level apprenticeship or employment.

### RELATED CAREERS


- ▶ Event Florist
- ▶ Floral Designer
- ▶ Florist
- ▶ Freelance
- ▶ Sales Advisor

ENTRY REQUIREMENTS*	FROM SCHOOL	FROM COLLEGE
Level 1	Four GCSEs at grades 9-2 (including English and maths)	Entry level 3 qualification in English and maths
Level 2	Four GCSEs at grades 9-3 (including English and maths)	Relevant level 1 qualification (to include English and maths at level 1 or higher)
Level 3		This course is for learners progressing from the level 2 course at merit grade or higher. English and/or maths at level 2 or higher is required.

\*Good attendance in your previous year is also required. Some courses require a higher grade in a particular subject – see our website for full details. Some related careers may require extra qualifications or experience. Plan your career at [farn-ct.ac.uk/career-zone](http://farn-ct.ac.uk/career-zone).







Learners have the chance to take part in vocational and employment tasters



Charles – Pathways to Independence / Supported Internship “I completed a work placement with Frimley Park Hospital during my course and found the job was a really good fit for me. I now work there full-time and enjoy meeting patients.”

COURSES >>>

# FOUNDATION AND ENTRY LEVEL STUDIES



Our programmes help build confidence and independence





**THESE COURSES ARE DESIGNED TO GIVE LEARNERS A BOOST IN CONFIDENCE AND THE SKILLS TO PROGRESS IN THEIR PERSONAL LIFE, THEIR STUDIES, OR INTO EMPLOYMENT.**

These courses are ideal for learners who work best in smaller groups and may require extra support or time to complete work within a mainstream environment. Learners may have attended a mainstream school, a school for those with special educational needs, have an Education, Health and Care Plan, had learning support at school, or not achieved the grades to move to a vocational level 1 programme.

These full-time programmes take one to two years to complete for those who are working towards entry 1 or level 1 qualifications, and/or who are not quite ready for a vocational level 1 programme.



**As a small department, our learners quickly make friends and feel comfortable**

## FOUNDATION AND ENTRY LEVEL STUDIES

We offer a range of courses that suit learners with different needs, abilities, and ambitions. Our friendly team will help you to find the best course for your goals and support you in progressing to your next steps.

### FOCUS ON LIFE SKILLS

#### PRE-ENTRY / ENTRY 1 / ENTRY 2 **2 YEARS**

- ▶ For school leavers who have attended a school for those with learning difficulties and/or disabilities, studying at pre-entry level and/or entry level 1, and who are likely to need continued support throughout their working life
- ▶ The aim of the programme is to provide opportunities to develop communication skills and generic work skills
- ▶ Studies include transferable work skills, regular supported work placement, cooking and independent living skills, digital skills and embedded English and maths, and enterprise and employability skills

Reviews are held with learners, parents/carers and relevant support agencies to discuss and plan future steps. Successful completion of the programme can lead to voluntary work, supported employment, continued vocational training, or other part-time education.

### PATHWAYS TO INDEPENDENCE

#### ENTRY 2 TO ENTRY 3 **2 YEARS**

##### Year 1 – First Step to Independence

##### Year 2 – Next Step to Independence

- ▶ For school leavers who may have an additional need or attended a school for learners with additional learning needs
- ▶ This programme aims to provide generic work skills, improved social skills, and independence, as well as an opportunity to try out a variety of subjects and attend a supported work placement
- ▶ Studies include maths, English and digital skills, developing a healthy lifestyle, independent living skills including travel training and cooking, and time in a vocational area (one morning per week in year 1, and one day per week in year 2)
- ▶ Applicants are expected to be working at/towards entry level 2 or entry level 3

Reviews are held with learners, parents/carers and relevant support agencies to discuss and plan future steps. Successful completion of the programme may enable you to progress to a level 1 programme, supported internship, or look for employment/supported employment.

**FIND US  
ON...**





## VOCATIONAL INTRODUCTION TO COLLEGE

### ENTRY LEVEL 3 — 1 YEAR

- ▶ For school leavers wanting to progress to a level 1 programme in a vocational area
- ▶ Learners may have studied GCSEs, achieving a grade 2 or below, or worked on Entry Level Certificates and may have required additional learning support during their time at school
- ▶ Topics covered include maths, English and digital skills, employment skills, independent study skills, and one day per week spent in a vocational area
- ▶ Applicants are expected to be working at/or towards entry 3 or level 1

Successful completion of the programme may enable you to progress to a level 1 programme, supported internship, look for employment, or continue vocational training.

## SUPPORTED INTERNSHIP

### ENTRY 2 LEVEL 1 — 1 YEAR

- ▶ For learners who have already studied a college programme and now want to find paid work
- ▶ You'll attend college three days per week between September and December, preparing for the workplace environment
- ▶ Between January and June, you will attend college one day per week and work three days a week, with regular visits from college staff and help from a job coach
- ▶ Your studies will include maths and English related to your job, employability skills, travel training to your workplace, and six months of work experience/placement (three days per week)

Successful completion of the programme will give you the chance to find employment or voluntary opportunities.

### ENTRY REQUIREMENTS\*

Pathways to Independence	Focus on Life Skills	Vocational Introduction to College	Supported Internship
--------------------------	----------------------	------------------------------------	----------------------

These courses do not have formal entry requirements. Entry is dependent upon successful interviews and link days.







You'll have opportunities to work alongside learners from across the College for creative events and photoshoots

COURSES >>>

# HAIR AND BEAUTY



**T-LEVELS**  
THE NEXT LEVEL QUALIFICATION

The next level qualification - T Levels available in this area



**DID YOU KNOW?**

Males account for **26% of hairdressers** and barbers in our area



We have guest demonstrations from professional stylists and therapists

Our learners often compete in local and national competitions



## CAREER SPOTLIGHT

Demand for Hairdressing and Beauty Salon Managers is expected to increase 5.5% by 2025 in the South East



Facilities mirror highstreet salons to give you a taste of the working environment



## Apprenticeships

Earn as you learn - apprenticeships available in this area

## THE HAIR AND BEAUTY INDUSTRIES ARE IDEAL FOR THOSE WHO HAVE CREATIVE FLAIR AND ENJOY MAKING PEOPLE LOOK AND FEEL GREAT.

Taught in our dynamic Hair and Beauty Academy salons, you'll learn specialist skills using professional-grade equipment. With plenty of practical projects and opportunities to work with real clients, you'll soon feel confident communicating with different people and putting your skills into practice.

## INDUSTRY LINKS

We're proud to have connected learners with:

- ▶ **Champneys**
- ▶ **L'Oréal**
- ▶ **Pennyhill Park Hotel and Spa**
- ▶ **Ruby Mane Salon**

## The HAIR & BEAUTY Academy

Our salons are open to members of the public, with services available at a fraction of high street prices. Find us on Facebook and Instagram @fcothairandbeautyacademy





# BEAUTY THERAPY

Get ready to make clients look and feel great in our high-end salon spaces. Our beauty therapy courses will provide you with plenty of hands-on skills and treatment know-how, ready to launch your career or study further as an apprentice.

**LEVEL 2 BEAUTY THERAPY**  
**LEVEL 2 = 1 YEAR**

- ▶ This hands-on course has been developed with employers to give you the skills needed to kick-start your career
- ▶ You'll discover techniques in make-up application, lash and brow treatments, manicure, pedicure and nail art, facial skin care, anatomy and physiology, and waxing, as well as learning key salon reception duties

You could progress to a level 3 qualification, such as T Level in Hairdressing, Barbering and Beauty Therapy, or Level 3 Beauty Therapy. Other options include apprenticeships or employment at junior-level.

**LEVEL 3 BEAUTY THERAPY**  
**LEVEL 3 = 1 YEAR**

- ▶ Learn even more treatments and take your knowledge from level 2 further with this more advanced course
- ▶ Your studies will include learning skills in stone therapy treatments, Indian head massage, massage with pre-blended oils, body massage, and facial electrical treatment
- ▶ By the end of this course, you'll have lots of experience working with clients, ready to progress into employment or self-employment

You could progress to a higher-level apprenticeship or employment.

**RELATED CAREERS**

- ▶ Advanced Skin Care Technician
- ▶ Beauty Therapist
- ▶ Beauty Consultant
- ▶ Make-up Artist
- ▶ Massage Therapist

ENTRY REQUIREMENTS*	FROM SCHOOL	FROM COLLEGE
Level 2	Three GCSEs at grades 9-3 (to include English, maths and science)	Relevant level 1 qualification (to include English and maths at level 1 or higher)
Level 3		This course is for learners who have successfully completed a relevant level 2 course.

# HAIRDRESSING, BARBERING AND BEAUTY THERAPY T-LEVELS

This new T Level offers an exciting opportunity to learn about the hair and beauty sector broadly before honing your skills in a specialist area of your choice. Learning hands-on skills and mastering your craft in our salons, you'll soon feel confident progressing to a career in settings such as spas, salons, cruise ships, and beyond.

**T LEVEL HAIRDRESSING, BARBERING AND BEAUTY THERAPY**  
**LEVEL 3 = 2 YEARS**

- ▶ This T Level provides a detailed introduction to this creative sector, looking at hair and beauty business practices, the client journey, and sales and marketing
- ▶ Your choice of specialist content includes barbering, hairdressing, or beauty therapy
- ▶ You'll be equipped with hands-on skills in the occupational pathway that you choose and experience working in industry, thanks to the 45-day work placement included

You could progress to a higher-level apprenticeship or employment.

**RELATED CAREERS**

- ▶ Barber
- ▶ Beauty Therapist
- ▶ Hairdresser
- ▶ Make-up Artist

ENTRY REQUIREMENTS*	FROM SCHOOL	FROM COLLEGE
T Level	Five GCSEs at grades 9-4 (including English and maths)	Relevant level 2 qualification at merit grade or higher (to include English and maths at level 2 or higher)

\*Good attendance in your previous year is also required. Some courses require a higher grade in a particular subject – see our website for full details. Some related careers may require extra qualifications or experience. Plan your career at [farn-ct.ac.uk/career-zone](http://farn-ct.ac.uk/career-zone).



# HAIR AND BEAUTY

This introductory course will give you background knowledge into both sectors and the chance to boost your maths and English grades alongside your studies.

## LEVEL 1 INTRODUCTION TO HAIR AND BEAUTY THERAPY

LEVEL 1 — 1 YEAR

- ▶ Ideal for learners looking to progress to level 2 study, this course will introduce you to the type of work that professional hairdressers and beauty therapists are involved in
- ▶ You'll develop skills in basic make-up, hand care, facials, styling hair, nail art, shampooing and conditioning, and salon reception duties, giving you the chance to explore which route you'd like to specialise in

You could progress to a level 2 qualification, such as Level 1 and 2 Hairdressing or Level 2 Beauty Therapy, or an apprenticeship.

### ENTRY REQUIREMENTS\*

Level 1	This course is for learners who need to develop and improve their maths and English skills
---------	--

# HAIRDRESSING

Hairdressing is the perfect career choice if you're creative, like working with your hands, and enjoy communicating with others. You'll dive straight into learning practical skills and working with real clients in our on-site salon.

## LEVEL 1 AND 2 HAIRDRESSING

LEVEL 1 — / LEVEL 2 — 2 YEARS

- ▶ Develop the key skills needed to launch your career in hairdressing
- ▶ Your studies will involve advising and consulting with clients, hair treatments including style and finish, set and dress, cut, colour and lighten, perm and neutralise, and shampoo, condition and treat the scalp, as well as salon reception duties

You could progress to an apprenticeship, or seek employment at junior-level.

### RELATED CAREERS

- ▶ Barber
- ▶ Hairdresser

### ENTRY REQUIREMENTS\*

	FROM SCHOOL	FROM COLLEGE
Level 1 and 2	Four GCSEs at grades 9-2 (including English and maths)	Entry level 3 qualification in English and maths



Hairdressing apprentices will have an artistic flair and plenty of enthusiasm. You'll be helping with reception duties, cutting and styling, advising clients, and colouring hair. Career opportunities could range from film sets to personal stylists.

Beauty therapists will learn skills in massage and various treatments. Your friendly attitude will help put clients at ease, while your customer service skills will help with promotional activities. Workplaces could include salons, cruise ships, hotels, or hospitals!

## HAIRDRESSING

- ▶ Hair Professional (Level 2)
- ▶ Advanced and Creative Hair Professional (Level 3)

## BEAUTY THERAPY

- ▶ Beauty Therapy (Level 3)

See online for entry requirements

**FARN-CT.AC.UK /  
APPRENTICESHIPS**

Practical assignments allow you to explore your own interests and style



### DID YOU KNOW?

According to Ofcom, 46% of those employed in the UK broadcasting industry are female and the number of senior female roles is growing!

COURSES >>>

# MEDIA, BROADCAST AND PRODUCTION

Previous work placements include the BBC and sports broadcasters



Our facilities range from a 4k editing suite to TV and radio studios



## CAREER SPOTLIGHT

Photographers, Audio-visual and Broadcasting Equipment Operators **earn an average salary of £31,200**

## DISCOVER A ROUTE INTO THE TV, FILM OR RADIO INDUSTRIES, FOR A CAREER THAT REWARDS HARD WORK AND CREATIVITY.

At Farnborough, you can look forward to learning in our TV studio, radio studios, and post-production suites, with access to a range of cameras and editing equipment. With plenty of practical projects and creative briefs for you to work on, there'll be lots of opportunities to expand your technical skillset and bring your ideas to life.

## INDUSTRY LINKS

We're proud to have connected learners with:

- **BT Sport**
- **Telegenic**
- **The Jewellery Channel**



**STAY AT FARNBOROUGH FOR YOUR DEGREE!**

See page 32



## T-LEVELS

THE NEXT LEVEL QUALIFICATION

The next level qualification - T Levels available in this area

Students often stay with us for a degree at University Centre Farnborough

George - Media Degree Student "I chose to stay for my degree as I worked well with the lecturers and my classmates. It's easy to get to and works better for me than moving away from home."




# CREATIVE MEDIA

Careers in media are creative and technical, with lots of disciplines you can specialise in. With our media courses, you'll get stuck-in using technical equipment and expressing your creativity from the get-go, supported by lecturers with great industry insight.




**ANY QUESTIONS?  
GET IN TOUCH**  
01252 407040  
INFO@FARN-CT.AC.UK

## LEVEL 3 CREATIVE MEDIA PRACTICE

**LEVEL 3**  **2 YEARS**


- ▶ This project-based programme will develop your practical skills and analytical ability, as well as giving you the media skills that employers are looking for
- ▶ You'll explore modules in TV, radio and film production, music videos, TV advertising, documentaries, and promotional videos; creating a portfolio of audio and visual work along the way
- ▶ Upon completion you'll feel confident to launch your career or study further with your new hands-on skills




You could progress to university-level study, an apprenticeship, or employment.  
**Stay for a degree at Farnborough – see P32**

**RELATED CAREERS**


- ▶ Camera Operator
- ▶ Director
- ▶ Editor
- ▶ Production Runner
- ▶ Sound Recordist

 **DEGREE PASSPORT SCHEME**

## LEVEL 2 MEDIA

**T LEVEL TRANSITION LEVEL 2**  **1 YEAR**

- ▶ Ideal for learners looking for a route to level 3 study and those progressing from level 1, this course provides the essential knowledge and skills used in the media sector
- ▶ Topics covered include video production, advertising, and audio production, with opportunities to conduct interviews, write scripts, and produce a range of audio and visual products



You could progress to a level 3 qualification, such as T Level Media, Broadcast and Production, Level 3 Creative Media Practice, or an apprenticeship. You may also be able to seek employment at junior-level.

## LEVEL 1 DIGITAL MEDIA AND VOCATIONAL SKILLS

**LEVEL 1**  **1 YEAR**

- ▶ Ideal for those who did not achieve the grades for our level 2 course, you will be able to work towards more advanced courses while improving your GCSE grades
- ▶ This introductory programme will give you insight into the range of exciting roles available in this highly creative sector
- ▶ Working hands-on with technical equipment, you'll learn how to make an audio recording, shoot a short film, and produce an advert
- ▶ This course includes preparation for employment, study at level 2, transferable skills, and work experience



You could progress to a level 2 qualification, such as Level 2 Media, or an apprenticeship.

ENTRY REQUIREMENTS*	FROM SCHOOL	FROM COLLEGE
Level 3	Five GCSEs at grades 9-4 (including English and maths)	Relevant level 2 qualification at merit grade or higher (to include English and maths at level 2 or higher)
Level 2	Four GCSEs at grades 9-3 (including English)	Relevant level 1 qualification (to include English and maths at level 1 or higher)
Level 1	One GCSE at grade 9-2 and based on application (including English and maths)	Entry level 3 qualification in English and maths

\*Good attendance in your previous year is also required. Some courses require a higher grade in a particular subject – see our website for full details. Some related careers may require extra qualifications or experience. Plan your career at [farn-ct.ac.uk/career-zone](http://farn-ct.ac.uk/career-zone).

# MEDIA, BROADCAST AND PRODUCTION T-LEVELS

Thanks to the 45-day work placement included, our T Level in Media, Broadcast and Production will equip you with technical skills and great experience to kick-start your career.

## T LEVEL MEDIA, BROADCAST AND PRODUCTION

LEVEL 3  2 YEARS

- ▶ Train for a career in this exciting creative sector, exploring core industry knowledge in your first year and choosing a specialist pathway in your second year
- ▶ Your choice of specialist content includes creative media technician, events and venues technician, or content creation and production
- ▶ As well as developing skills using media equipment and techniques, you'll be equipped with knowledge of audience and consumer needs, research and project skills, and creative economics

You could progress to university-level study, an apprenticeship, or employment.

**Stay for a degree at Farnborough – see P32**

### RELATED CAREERS

- ▶ Camera Operator
- ▶ Lighting Technician
- ▶ Radio Broadcast Assistant
- ▶ Studio Sound Engineer
- ▶ TV or Film Production Assistant
- ▶ Video Editor



**DEGREE PASSPORT SCHEME**

ENTRY REQUIREMENTS*	FROM SCHOOL	FROM COLLEGE
T Level	Five GCSEs at grades 9-4 (including English and maths)	Relevant level 2 qualification at merit grade or higher (to include English and maths GCSEs at grade 4 or higher)



**TV STUDIO**





Performance spaces have ranged from schools to local festivals

COURSES >>>

# MUSIC AND PERFORMING ARTS



Facilities include a large theatre, dance studio, radio studio, mix room, live sound stage, and recording spaces



**DID YOU KNOW?**

Experienced Live Sound Engineers can earn up to £40,000 per year

You'll have opportunities to take part in live performances during your studies



## CAREER SPOTLIGHT

Actors, Entertainers and Presenters in the South East earn an average salary of £37,440

Guest talks throughout the year will provide you with industry-insight



## AN IDEAL SUBJECT AREA FOR THOSE WITH A PASSION FOR PERFORMING AND AN INTEREST IN WHAT GOES ON BEHIND THE SCENES.

Whether you picture yourself backstage or centre stage, our courses will equip you with a range of technical production skills and performance techniques to help you shine. You'll benefit from support from our industry-experienced lecturers, close-knit classes, and modern equipment to expand your skillset.

## INDUSTRY LINKS

We're proud to have connected learners with:

- ▶ **Cody Musical Theatre**
- ▶ **Music in the Park**
- ▶ **The Secret Stage Theatre**
- ▶ **Starburst Theatre**
- ▶ **Sontronics**
- ▶ **The West End Centre**



MUSIC

Discover the skills needed to launch your career in the music industry. Our courses will equip you with a combination of professional performance techniques, technical production skills, and knowledge of music business methods, so that you'll finish your studies with a wide skill-set and a range of performance experiences.



**START THIS  
SEPTEMBER**  
APPLY ONLINE NOW  
AT [FARN-CT.AC.UK](https://farn-ct.ac.uk)

LEVEL 3 MUSIC AND MUSIC TECHNOLOGY

LEVEL 3 ≡ 2 YEARS

- ▶ Taught by industry professionals in our dedicated facilities, this course will take your interest in music to the next level by exploring different genres and performance styles
- ▶ Your studies will include topics on performance, composition, recording, music and society, live sound, and the music industry, with insight from guest speakers throughout the year
- ▶ Practical projects will involve composing music in our Mac suites, performing live on stage to audiences, and recording songs in our technical studios



You could progress to university-level study, an apprenticeship, or employment.

**Stay for a degree at Farnborough – see P32**

RELATED CAREERS

- ▶ Live Sound Engineer
- ▶ Musician
- ▶ Recording Artist
- ▶ Song Writer
- ▶ Studio Engineer



DEGREE PASSPORT SCHEME

You could progress to a level 3 qualification, such as Level 3 Music and Music Technology, or an apprenticeship. You may also be able to seek employment at junior-level.



LEVEL 2 MUSIC

LEVEL 2 ≡ 1 YEAR

- ▶ This course will introduce you to both music and music technology, covering a wide range of topics and providing a route to level 3 study
- ▶ As well as providing opportunities to perform throughout your studies, you'll explore modules in composition, recording music, the music industry, and music computer systems

ENTRY REQUIREMENTS*	FROM SCHOOL	FROM COLLEGE
Level 3	Five GCSEs at grades 9-4 (including English and maths) and successful audition	Relevant level 2 qualification at merit grade or higher (to include English and/or maths at level 2 or higher)
Level 2	Four GCSEs at grades 9-3 (including English and maths) and successful audition	Relevant level 1 qualification (to include English and maths at level 1 or higher)



\*Good attendance in your previous year is also required. Some courses require a higher grade in a particular subject – see our website for full details. Some related careers may require extra qualifications or experience. Plan your career at [farn-ct.ac.uk/career-zone](https://farn-ct.ac.uk/career-zone).



# PERFORMING ARTS

Is the stage calling your name? A qualification in performing arts can help you to develop skills used in industry and master your performance techniques. You can look forward to taking part in live shows throughout the year, including plays, children's theatre shows, and performing arts showcases.

## LEVEL 3 PERFORMING ARTS

LEVEL 3 ≡ 2 YEARS

- ▶ This course will help you to develop performance skills in all three disciplines of acting, dancing and singing, as well as providing an in-depth look into the performing arts sector
- ▶ Your studies will include modules in dance technique, performance styles, children's theatre, and musical theatre
- ▶ Rehearsing in our dance studio and performing shows to live audiences in our theatre, you'll finish this course equipped with practical skills and a portfolio filled with experiences

You could progress to university-level study, an apprenticeship, or employment.

**Stay for a degree at Farnborough – see P32**

### RELATED CAREERS

- ▶ Actor
- ▶ Broadcast Presenter
- ▶ Choreographer
- ▶ Dancer
- ▶ Screenwriter
- ▶ Theatre Director



### DEGREE PASSPORT SCHEME

You could progress to a level 3 qualification, such as Level 3 Performing Arts Practice, or an apprenticeship. You may also be able to seek employment at junior-level.

## LEVEL 2 PERFORMING ARTS

LEVEL 2 = 1 YEAR

- ▶ This introductory course explores drama, dance and performing arts, with opportunities to perform throughout your studies
- ▶ You'll explore topics in movement skills, devising skills, monologue technique, musical theatre skills, acting, and industry engagement, providing a smooth pathway to level 3 study

ENTRY REQUIREMENTS*	FROM SCHOOL	FROM COLLEGE
Level 3	Five GCSEs at grades 9-4 (including English and maths) and successful audition	Relevant level 2 qualification at merit grade or higher (to include English and/or maths at level 2 or higher)
Level 2	Four GCSEs at grades 9-3 (including English and maths) and successful audition	Relevant level 1 qualification (to include English and maths at level 1 or higher)



Assignments are often practical to bring the subject to life

COURSES >>>

# SCIENCE AND CRIMINOLOGY



**T-LEVELS**  
THE NEXT LEVEL QUALIFICATION

The next level qualification -  
T Levels available in this area



**DID YOU  
KNOW?**

Experienced Forensic  
Scientists can earn up to  
£45,000 per year

Lecturers come  
from a range of  
scientific  
backgrounds



You can perform virtual dissections using our new Anatomage table



## Apprenticeships

Earn as you learn - apprenticeships available in this area

## FOR THOSE WITH AN INQUISITIVE MIND, OUR SCIENCE AND CRIMINOLOGY PROGRAMMES PROVIDE A DETAILED LOOK INTO THESE FASCINATING AREAS OF STUDY.

With access to our well-equipped science labs and new MedTech Centre, you'll have plenty of opportunities to conduct experiments and get stuck-in with practical investigations. Whether you see yourself working at a laboratory, a crime scene, or as a researcher, we'll help take your career plans to the next level.

## INDUSTRY LINKS

We're proud to have connected learners with:

- ▶ Afton Chemical
- ▶ Boston Medical
- ▶ Procter and Gamble



## CAREER SPOTLIGHT

Demand for Biology, Physical and Chemical Scientists is expected to increase 2.6% by 2025

Our new MedTech Centre contains some of the latest medical training technology





# SCIENCE T-LEVELS

If you love putting scientific ideas into practice and flourish when taking on hands-on tasks, these T Levels will give you a great foundation of skills that open doors to technician-level roles and higher education. You'll cover core content in the first year, with specialist content available in the second year.



## T LEVEL SCIENCE

LEVEL 3 ≡ 2 YEARS

- ▶ Get a head-start on your career in a science setting with this T Level, where you'll spend 20% of your time gaining experience in the workplace
- ▶ Your choice of specialist content includes lab science, food science, or metrology science
- ▶ You'll explore topics in understanding the science sector, scientific methodology, and experimental equipment and techniques, as well as further science knowledge in the cell cycle, enzyme and protein structure, pathogens, and more

You could progress to university-level study, an apprenticeship, or employment.

### RELATED CAREERS

- ▶ Food Manufacturing Inspector
- ▶ Laboratory Technician
- ▶ Metrologist

 **DEGREE PASSPORT SCHEME**

## T LEVEL HEALTHCARE SCIENCE

LEVEL 3 ≡ 2 YEARS

- ▶ For those interested in working in a healthcare setting, this T Level covers the practical scientific and clinical skills needed to succeed
- ▶ The specialist content covered in this T Level is 'assisting with healthcare science'
- ▶ Your studies will include topics around understanding the healthcare science sector in general, human anatomy and physiology, genomics and medical physics, providing person-centred care, and infection prevention and control

You could progress to university-level study, an apprenticeship, or employment.

### RELATED CAREERS

- ▶ Healthcare Science Assistant
- ▶ Radiography Assistant
- ▶ Sterile Services Technician

 **DEGREE PASSPORT SCHEME**

## LEVEL 3 APPLIED SCIENCE

LEVEL 3 ≡ 2 YEARS

- ▶ This course will give you a particularly hands-on approach to studying biology, chemistry, and physics
- ▶ You'll be looking at industry-relevant topics such as laboratory techniques, industrial chemical reactions, and applications of science and contemporary issues
- ▶ The key subjects covered in this course make it a great foundation for university-level courses, with previous learners choosing this route over A Levels
- ▶ Thanks to the hands-on nature of the course, the information you learn means you will be able to apply this to real-life situations and junior-level jobs

You could progress to university-level study, an apprenticeship, or employment.

### RELATED CAREERS

- ▶ Chemist
- ▶ Forensic Scientist
- ▶ Laboratory Technician
- ▶ Research Scientist
- ▶ Scientist

 **DEGREE PASSPORT SCHEME**

ENTRY REQUIREMENTS*	FROM SCHOOL	FROM COLLEGE
T Level/Level 3	Five GCSEs at grades 9-4 (including English and maths)	Relevant level 2 qualification at merit grade or higher (to include English and maths at level 2 or higher).

\*Good attendance in your previous year is also required. Some courses require a higher grade in a particular subject – see our website for full details. Some related careers may require extra qualifications or experience. Plan your career at [farn-ct.ac.uk/career-zone](https://farn-ct.ac.uk/career-zone).

# CRIMINOLOGY

If you find yourself hooked on crime documentaries and reading about current court cases in the news, studying criminology could turn these interests into real-world skills and provide a route into a fascinating career.

## LEVEL 3 CRIMINOLOGY

LEVEL 3  2 YEARS

- ▶ This subject is equivalent to studying one A Level and you'll need to study two A Levels alongside it (see page 44 for options)
- ▶ Explore the psychology of crime with an analytical viewpoint, along with how the media chooses to represent it
- ▶ Your studies will include looking at changing awareness of crime, criminological theories, crime scene to courtroom, and crime and punishment, bringing the work of forensics and judiciary processes to life

You could progress to university-level study, an apprenticeship, or employment.

**Stay for a degree at Farnborough – see P32**

### RELATED CAREERS

- ▶ Detective
- ▶ Police Officer
- ▶ Prison Officer
- ▶ Probation Officer
- ▶ Social Worker



**DEGREE PASSPORT SCHEME**

ENTRY REQUIREMENTS*	FROM SCHOOL	FROM COLLEGE
Level 3	Five GCSEs at grades 9-4 (including English and maths)	Relevant level 2 qualification at merit grade or higher (to include English and/or maths at level 2 or higher)



A science apprenticeship could see you working in the chemical, pharmaceutical, biotechnological, and analytical science services. Your tasks may be to carry out both routine and one-off laboratory testing, and could involve a variety of technical support functions across your organisation.

- ▶ Laboratory Technician (Level 3)



See online for entry requirements

**[FARN-CT.AC.UK/  
APPRENTICESHIPS](https://farn-ct.ac.uk/apprenticeships)**



We host guest speakers, which have previously included the British Army, serving police officers, and professional athletes and coaches

COURSES ►►

# SPORT AND PROTECTIVE SERVICES



## DID YOU KNOW?

In our region, 44% of vacancies for Police Officers are due to a skills shortage



## NEW ESPORTS COURSE

Find out more on page 86!

Protective Services learners complete outdoor expeditions and leadership exercises







## CAREER SPOTLIGHT

Performance Sport Scientists  
earn an average salary of  
between £20,000 to £60,000  
per year

Our recently refurbished gym contains modern equipment to support practical assessments

**THESE SUBJECTS ARE BROUGHT TO LIFE IN OUR MODERN ON-SITE FACILITIES, WITH INSIGHT FROM INDUSTRY-EXPERIENCED LECTURERS.**

Whether you want to transform your passion for sport into an exciting career or seek a rewarding role in the public service sector, you'll be equipped with valuable new skills that'll leave you feeling confident about your next steps.

## INDUSTRY LINKS

We're proud to have connected learners with:

- ▶ Harlequins Rugby Coach
- ▶ Local Leisure Facilities
- ▶ Grenadier Guards
- ▶ Royal Navy



**UNIVERSITY  
CENTRE  
FARNBOROUGH**

**STAY AT FARNBOROUGH  
FOR YOUR DEGREE!**

See page 32

Students often stay with us for a degree at University Centre Farnborough

Sean – Sport Graduate “The closeness with the lecturers and how genuine their concern was for us was, in my opinion, better than at any other uni. I’m now planning to do a Masters in Sports Nutrition.”

# SPORT

Whether you're curious about how the human body is capable of running a marathon, are fascinated by the effect food has on sport performance, or want to know how to increase your fitness, a qualification in sport will cover these topics and more - leading to a range of exciting careers.



USE OUR  
CAREER TOOLS  
AT [FARN-CT.AC.UK](http://farn-ct.ac.uk)

## LEVEL 3 SPORT AND EXERCISE SCIENCES


LEVEL 3 ≡ 2 YEARS

- ▶ Ideal for those who are both passionate about sport and interested in the science behind the human body
- ▶ You'll explore modules in functional anatomy, coaching for performance, specialised fitness training, sports massage, nutrition for sport, and exercise science performance
- ▶ Courses are brought to life in our on-site gym, helping you prepare to study further or launch your career using your new practical skills

You could progress to university-level study, an apprenticeship, or employment.  
**Stay for a degree at Farnborough – see P32**

**RELATED CAREERS**

- ▶ Fitness Instructor
- ▶ Nutritionist
- ▶ Sport Scientist
- ▶ Strength and Conditioning Coach

 **DEGREE PASSPORT SCHEME**

## LEVEL 3 SPORT

LEVEL 3 ≡ 2 YEARS

- ▶ This course covers the knowledge and skills needed to progress into a career in sport coaching and participation
- ▶ Your studies will include fitness training and programming, coaching for performance, sports leadership, skill acquisition, and sport psychology
- ▶ Through practical assignments and projects, you'll be equipped with a detailed understanding of the sport industry, backed up with hands-on skills and knowledge of sport theory

You could progress to university-level study, an apprenticeship, or employment.  
**Stay for a degree at Farnborough – see P32**

**RELATED CAREERS**

- ▶ Gym Instructor
- ▶ PE Teacher
- ▶ Personal Trainer
- ▶ Sports Coach

 **DEGREE PASSPORT SCHEME**

## LEVEL 2 SPORT

LEVEL 2 = 1 YEAR

- ▶ Gain a broad knowledge of the sport and sport science industry, developing transferable skills and a route to level 3 study
- ▶ Topics covered on this course include fitness for sport and exercise, practical sports performance, training for personal fitness, and leading sports activities

You could progress to a level 3 qualification, such as Level 3 Sport and Exercise Sciences, Level 3 Sport, Level 3 Protective Services, or an apprenticeship. You may also be able to seek employment at junior-level.

ENTRY REQUIREMENTS*	FROM SCHOOL	FROM COLLEGE
Level 3	Five GCSEs at grades 9-4 (including English and maths)	Relevant level 2 qualification at merit grade or higher (to include English and maths at level 2 or higher)
Level 2	Four GCSEs at grades 9-3 (including English and maths)	Relevant level 1 qualification (to include English and maths at level 1 or higher)

\*Good attendance in your previous year is also required. Some courses require a higher grade in a particular subject – see our website for full details. Some related careers may require extra qualifications or experience. Plan your career at [farn-ct.ac.uk/career-zone](http://farn-ct.ac.uk/career-zone).



## PUBLIC AND PROTECTIVE SERVICES

Ideal for those seeking a rewarding career in the public services sector. These courses will provide you with a base knowledge and the transferable skills needed to kick-start your career, with insight from lecturers who have experience in a range of different public services roles.

### LEVEL 3 UNIFORMED PROTECTIVE SERVICES

LEVEL 3  2 YEARS

- ▶ This course will prepare you for a career that'll make the most of your people skills, teamwork, and determination
- ▶ You'll develop transferable skills that can be applied across all the public services, including the police, fire service, Army, Royal Navy, Royal Marines, Air Force, prison service, security organisations, and HM Customs
- ▶ Your studies will include modules on outdoor expeditions, navigational skills, and government laws and legislation, brought to life through practical projects and leadership activities

You could progress to university-level study, an apprenticeship, or employment.

**Stay for a degree at Farnborough – see P32**

#### RELATED CAREERS

- ▶ Customs Officer
- ▶ Firefighter
- ▶ Police Officer
- ▶ Police Community Support Officer
- ▶ Prison Warden
- ▶ Sailor
- ▶ Soldier



#### DEGREE PASSPORT SCHEME

You could progress to a level 3 qualification, such as Level 3 Public Services, Level 3 Sport and Exercise Sciences, Level 3 Sport, or an apprenticeship. You may also be able to seek employment at junior-level.

### LEVEL 2 UNIFORMED PUBLIC SERVICES

LEVEL 2  1 YEAR

- ▶ Develop the base knowledge needed to progress towards further study and a career in the public services
- ▶ You'll learn about the role of the public services and their work, the effects of diet, nutrition and lifestyle on a person's fitness, the effect of crime on individuals and society, and practical skills in map reading and expedition planning

ENTRY REQUIREMENTS*	FROM SCHOOL	FROM COLLEGE
Level 3	Five GCSEs at grades 9-4 (including English and maths)	Relevant level 2 qualification at merit grade or higher (to include English and/or maths at level 2 or higher)
Level 2	Four GCSEs at grades 9-3 (including English and maths)	Relevant level 1 qualification (to include English and maths at level 1 or higher)



# TRAVELLING TO COLLEGE



## PUBLIC TRANSPORT

Both Farnborough and Aldershot campuses are easily accessible by bus, as both sites are next to main bus routes. The two college sites are conveniently located around one mile from a mainline station (Farnborough Main and Aldershot, respectively), making travel by train an option too.



## CAR

We encourage all students to consider public transport and environmentally-friendly modes of transport, but free parking is available to students at both Farnborough and Aldershot.



## BICYCLE

Travelling by bike is good for your health, the environment and we have plenty of cycle racks for you to lock your bike to.



## SAVE MONEY

South Western Railway and Stagecoach buses offer discounts through the College that can save a surprising amount of money each year. Find out more at [www.farn-ct.ac.uk/travel](http://www.farn-ct.ac.uk/travel).



## UNSURE ABOUT PUBLIC TRANSPORT ROUTES?

Visit [www.traveline.info](http://www.traveline.info) to plan your journey to us using public transport.



# OTHER INFORMATION

The College undertakes to take all reasonable steps to provide educational services in the manner set out in this prospectus and in any further document issued to you, should you become a student of the College. The College reserves the right to cancel, suspend or modify in any way the matters contained in this prospectus.

The specific careers and industry-related information in this prospectus is sourced from the National Careers Service website, EMSI Economic Modelling service, Pathways Careers Data and trusted industry websites; it should be used as a guide only and was accurate in August 2022. Career examples given represent the range of jobs available in each industry and may require experience and additional training beyond college for greater prospects.

Industry links represent companies that the College has previously connected with, which could be through apprenticeships, work placements, careers workshops, guest speakers and collaboration on projects.

## EQUALITY AND DIVERSITY

We believe that all students and members of staff should have the opportunity to fulfil their potential whatever their background, identity and circumstance. We are committed to creating a community that recognises and celebrates difference within a culture of respect and cooperation. We appreciate that a culture which promotes equality will create a positive environment and a shared sense of belonging for all who work, learn and use the services of our college.

**"WE ARE COMMITTED TO  
CREATING A COMMUNITY  
THAT RECOGNISES AND  
CELEBRATES DIFFERENCE"**

## SAFEGUARDING

The College is committed to safeguarding the welfare of its students, particularly young people under the age of 18 and vulnerable adults. To meet those responsibilities, the College will ensure that relevant and effective safeguarding practices exist and are actively promoted within the College. All students have the right to be safe and protected both within the College and while engaged in College-related activities, and their safety, welfare and well-being are of paramount importance.



## FLORISTRY SHOP

Students at the College run a modern, well-stocked floristry shop, where customers can place orders for a range of different needs.

Visit [www.farn-ct.ac.uk/floristry](http://www.farn-ct.ac.uk/floristry) to place an order.



## THE GALLERY RESTAURANT

The restaurant is run by our award-winning catering students and is open for:

Mondays: Lunch

Tuesdays: Lunch

Thursdays: Dinner

Make a reservation on  
**01252 407171** or email  
[gallery@farn-ct.ac.uk](mailto:gallery@farn-ct.ac.uk)

[www.farn-ct.ac.uk/gallery](http://www.farn-ct.ac.uk/gallery)

Visit [www.galleryrestaurant.co.uk](http://www.galleryrestaurant.co.uk) for offers and events.



## The HAIR & BEAUTY Academy

Hair, Beauty Therapy and Holistic treatments at great prices.

Visit our training salons, which are open to members of the public and students looking for a new look at a fraction of high street prices.

Book your appointment on  
**01252 407243.**

See our full list of treatments at [www.farn-ct.ac.uk/academy](http://www.farn-ct.ac.uk/academy).



# ADULT EDUCATION

## LIFE CHANGING LEARNING

Our adult education courses range from one-day workshops to apprenticeships, degrees, online courses, and more specialist vocational qualifications.

We're adding new courses throughout the year so visit our website to explore your options.

[www.farn-ct.ac.uk/adult-learners](http://www.farn-ct.ac.uk/adult-learners)



**NEW**

**VISIT**

**[WWW.FOCAL.AC.UK](http://WWW.FOCAL.AC.UK)**

for our latest range of online training  
– many courses are fully funded by the  
government for those eligible.

# OPEN EVENTS

## OPEN EVENTS AT FARNBOROUGH:

WEDNESDAY 12 OCTOBER 2022	4.00 - 7.30PM
THURSDAY 13 OCTOBER 2022	4.00 - 7.30PM
WEDNESDAY 23 NOVEMBER 2022	4.00 - 7.30PM
WEDNESDAY 8 FEBRUARY 2023	4.00 - 7.30PM

## OPEN EVENTS AT ALDERSHOT:

For programmes in construction trades, please visit us at our purpose-built Aldershot campus.

THURSDAY 20 OCTOBER 2022	4.00 - 7.30PM
TUESDAY 22 NOVEMBER 2022	4.00 - 7.30PM
THURSDAY 9 FEBRUARY 2023	4.00 - 7.30PM

REGISTER ONLINE AT  
**[WWW.FARN-CT.AC.UK/EVENTS](http://WWW.FARN-CT.AC.UK/EVENTS)**



Farnborough College  
of Technology

Farnborough College of Technology  
Boundary Road  
Farnborough  
Hampshire GU14 6SB

01252 405555  
[info@farn-ct.ac.uk](mailto:info@farn-ct.ac.uk)  
[farn-ct.ac.uk](http://farn-ct.ac.uk)



Information from this guide can be made available in other formats. Please contact 01252 407558 so we can provide you with a format that is best suited to you.

## PRIORITY INTERVIEW

APPLY BY 27 NOVEMBER  
2022 TO FAST-TRACK  
YOUR APPLICATION