

A photograph of a female teacher with blonde hair in a ponytail, wearing a dark blue cardigan, leaning over a table and smiling at two students. The students, a boy and a girl, are wearing grey school uniforms with red and white striped ties. They are looking at something on the table. In the background, other students and a teacher are visible, along with a large screen displaying text. On the table in the foreground, there is electronic equipment with red and blue wires connected to it.

Oakmoor School – Equipment

Equipment expectations

Equipment expectations menu

Expectations explained

Our equipment map

Mentor time flowchart

Equipment sanction ladder

Stationary shop

School bag

Equipment expectations

- Your mentor will check your equipment after the register each morning.
- It is a student's responsibility to be fully equipped every day.
- You must check your pencil case every evening.
- Any missing items must be replaced by ***you***.
- Failure to have correct equipment will lead to your mentor setting you a detention.

**Index
page**

Pencil case

Ruler

Scientific
Calculator

2 x Black pens

2 x pencils

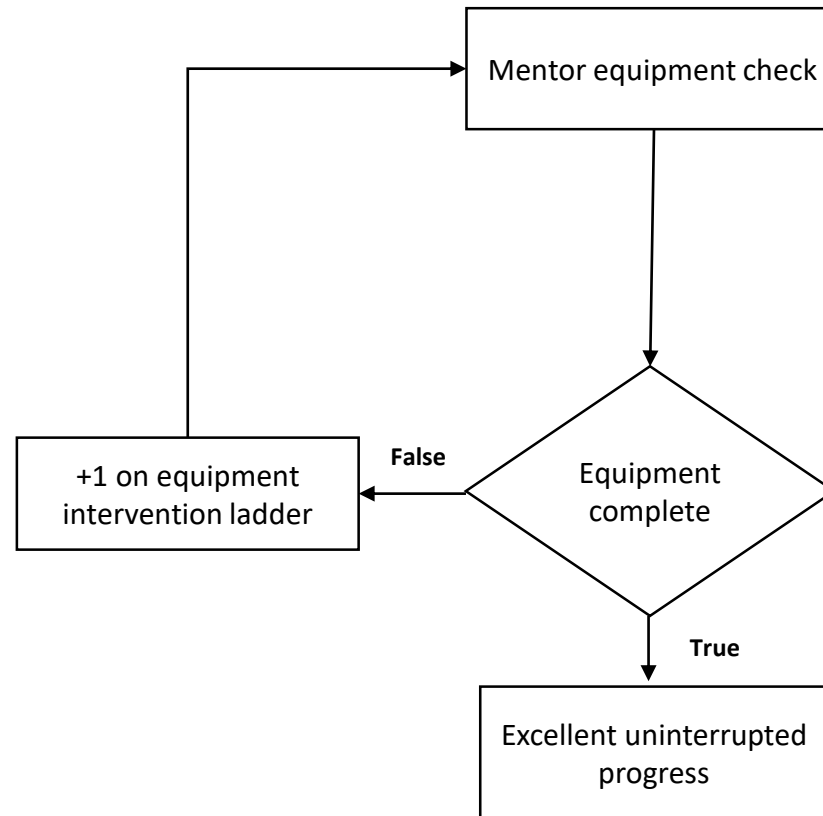
Sharpener

Rubber

You also need your
planner and a
reading book.

Oakmoor School - Minimum required equipment

Index
page



Index page

Equipment sanction ladder

Stage	Intervention	Time period before escalation
1	Mentor check for reason – 5 minute break DT	Next day
2	Mentor contact home – 10 minute break DT	Next day
3	30 minute mentor DT	2 days
4	1 hour mentor DT	2 days

**Index
page**

Equipment price list

Stationary shop

Students will be able to purchase stationary during breakfast club which runs every school day between 8:00 – 8:30 am in the school canteen.

Students will ***not be able*** to buy equipment during the school day.

Stationary price list

Eraser 5p

Pencil sharpener 5p

Pen 5p

Pencil 5p

Ruler 15p

Pencil case 50p

Index
page

School bag expectations

School bags ***must be***:

- Large enough to carry A4 folders.
- At least 40 cm x 40 cm in size.
- Must be able to contain all your other equipment.

School bags ***must not be***:

- Less than 40cm x 40cm in size.

Consequence for incorrect school bag.

Mentor to contact home. Discuss time scale. Use equipment sanction ladder.

**Index
page**