

A photograph of a female teacher with blonde hair in a ponytail, wearing a dark blue cardigan over a patterned top, leaning over a desk and smiling at two students. The students, a boy and a girl, are wearing grey school uniforms with red and white striped ties. They are looking at a science experiment setup on the desk, which includes a breadboard, red and blue jumper wires, and a small yellow component. In the background, other students and a teacher are visible, along with a large screen displaying a presentation. The image has a blue diagonal overlay in the top left and a purple diagonal overlay in the bottom right.

# Oakmoor School – Uniform policy

# Uniform expectations

## Uniform expectations menu

Reasons for our school uniform

Reasons for our rules

Consequences

Mentor flowchart

Expectations for whole school day

Part 1 – Shirt, blazer, jumper

Part 2 – Trousers, shorts, skirts & Socks

Part 3 – Shoes

Part 3 – Shoe examples

Part 4A – PE uniform – compulsory

Part 4B – PE uniform - optional

Part 5 – Top coats

Part 6 – Jewellery

Part 7 – Hairstyles

Part 8 – Nails

Part 9 – Makeup

Part 10 – Piercings

# Why do we have uniform rules?

1. To learn how to present yourself professionally. For example many careers require a uniform.
2. Uniform allows you to show how proud you are to belong to Oakmoor School.
3. Equality. Pupils don't compare branded items, which can cause a lot of upset because some people can't afford them.

**Index  
page**

# Why these rules?

## Interruption free learning

- By following clear expectations for uniform, we will have interruption free learning.
- There will be clear, consistent consequences for breaches of our uniform rules.
- With a valid reason we will accept one item of uniform being incorrect for a short period of time.
- More than one incorrect or missing piece of uniform will lead to isolation with your mentor.
- ***For uniform parts 5 - 9*** . Students will be isolated with mentor until the situation is rectified.

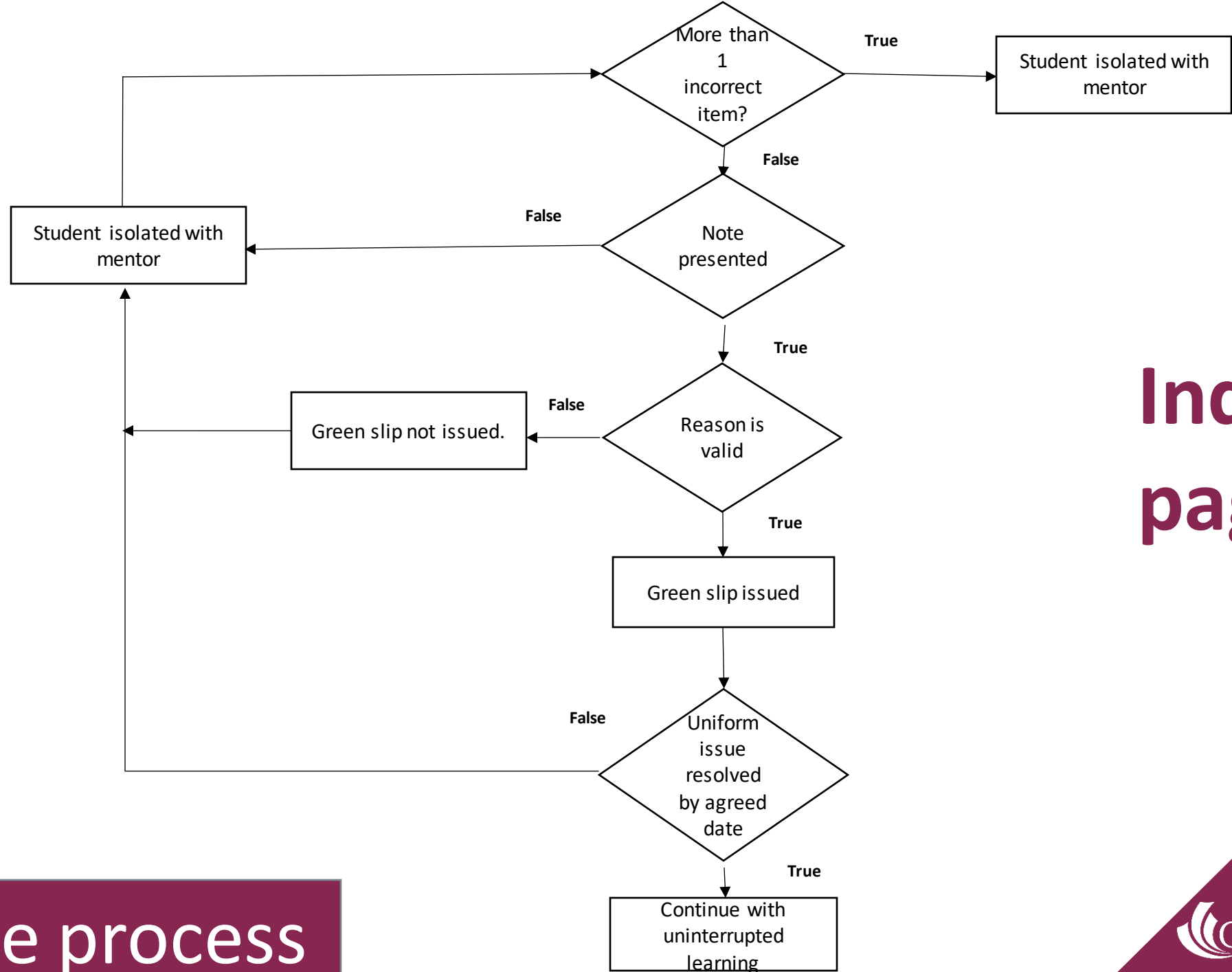
Index  
page

# Consequences

## Missing / incorrect item of uniform

- If an item of your uniform is missing or incorrect you must present a note to your mentor.
- The note must:
  - specify the missing or incorrect item of uniform.
  - state when the situation will be corrected. This must be in a **timely manner**.
- Your mentor will issue a green uniform slip to avoid subsequent discussion during your school day.
- Students with missing or incorrect uniform with **no green slip** will be **isolated with their mentor** until a note from your parent or guardian is provided.
- If the **issue is not resolved** by the designated date you will be **isolated with your mentor**.

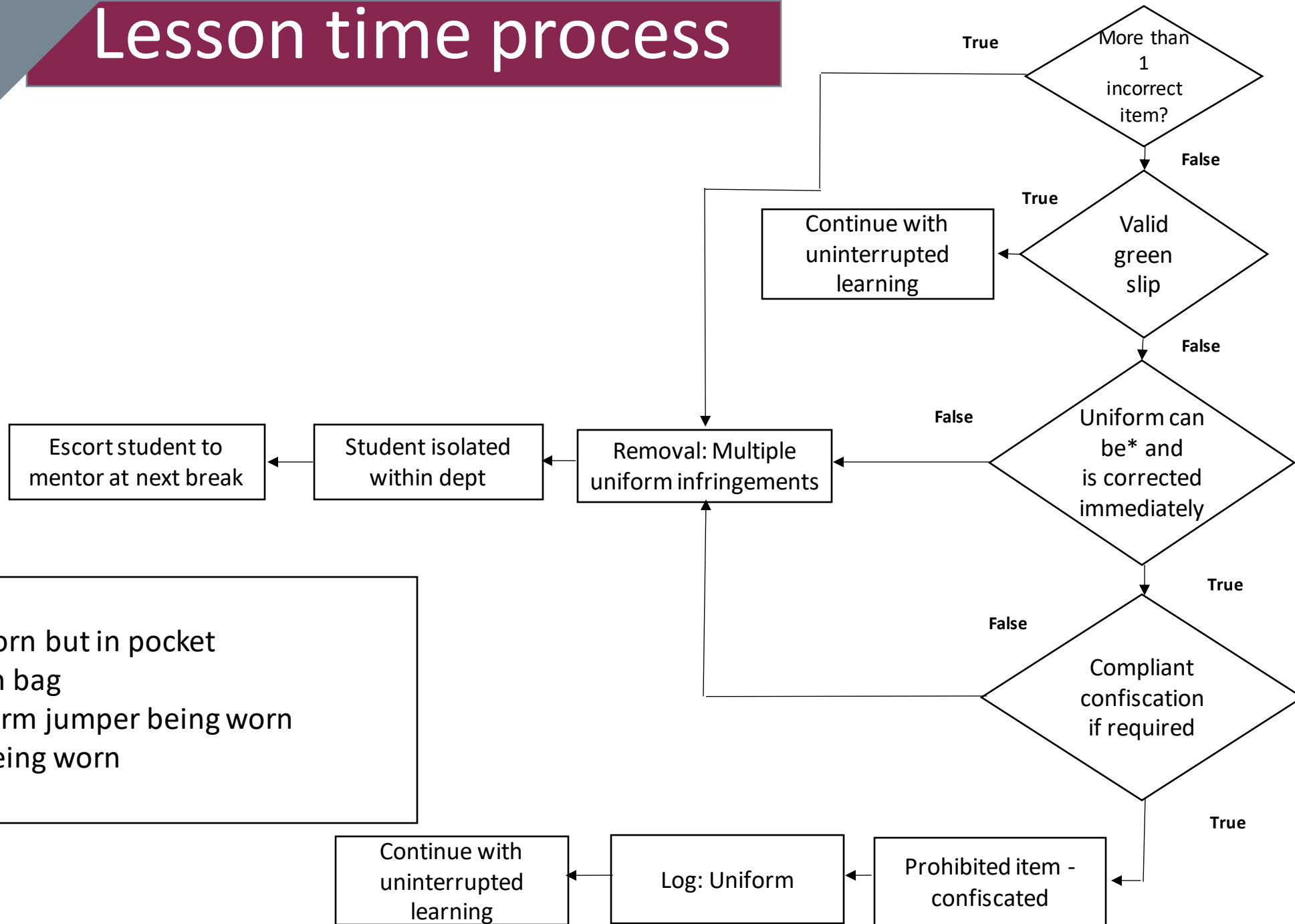
Index  
page



Index  
page

Mentor time process

# Lesson time process



Index  
page

\*E.g. -  
Tie not worn but in pocket  
Trainers in bag  
Non uniform jumper being worn  
Hoodie being worn  
Jewellery



# Consequences for incorrect uniform

During the school day you are expected to maintain high standards of dress

- If you are caught not wearing your uniform correctly by a member staff, they will log the incident onto your record.
- If this is repeated your mentor will set a 30 minute detention.

**Index  
page**

Examples typically include:

- Not wearing a tie.
- Wearing topcoat under blazer.
- Wearing trainers after PE or break.



# Uniform expectations

## Part 1

- A. White collared shirt worn with school tie.
- B. Grey school blazer with badge.
- C. The optional burgundy jumper can be worn ***under*** the blazer ***only***.

Index  
page

# Uniform expectations

## Part 2

A. School trousers.

B. School skirt (supplier only).

C. School shorts (supplier only).

D. Socks.

**Index  
page**

# Uniform expectations

## Part 2A school trousers

School trousers ***must be***:

- black, smart, suit style trousers.
- straight legged, loose fitting trousers.

School trousers ***must not be***:

- denim or denim-style trousers.
- flared trousers.
- very tight trousers.
- leggings.
- fashion trousers with decorative buttons, belts or decorated pockets.
- Belts can be worn must be plain and should not be eye catching.

Part  
2  
index

# Uniform expectations

## Part 2B school skirt

School skirts ***must be:***

- black knee-length box pleat skirt (***supplier only***).
- worn at knee length.

School skirts ***must not be:***

- sourced from any other shop other than our supplier.
- rolled up or adjusted to fit shorter than knee length.
- a pencil skirt
- a bodycon skirt
- a tube skirt

Part  
2  
inde  
x

# Uniform expectations

## Part 2C school shorts

School shorts ***must be:***

- Tailored black shorts (***supplier only***).

School shorts ***must not be:***

- sourced from any other shop other than our supplier.
- made from sweat style material.
- sports shorts.

Part  
2  
index

# Uniform expectations

## Part 2D school socks

School socks ***must be***:

- black or white ankle socks (not worn over tights).
- black or tan tights (recommended with skirts)..
- black knee length socks with a skirt.

School socks ***must not be***:

- over the knee or mid thigh in length.
- Any colour other than black or white.

Part  
2  
index

# Uniform expectations

## Part 3 School shoes

School shoes ***must be***:

- black and polishable with a sensible heel.
- worn under trousers if they are boots.

School shoes ***must not be***:

- black trainers (Air force style).
- canvas shoes.
- skater or other casual style shoes.
- high healed or stiletto styled.

**Index  
page**

**Examples**



# Uniform expectations

## Part 3A School shoe examples

**Allowed**



**Not allowed**



**Index  
page**

# PE Uniform expectations

Part 4A Compulsory PE items	
PE Shirt	Burgundy shirt with school logo ( <b><i>supplier only</i></b> ). Key stage 4 BTEC Sport students are permitted to wear the black oakmoor sports top ( <b><i>supplier only</i></b> ).
Black Shorts and Skort	Black compulsory ( <b><i>supplier only</i></b> ).
Socks	Black or white socks. Long black socks required for fixtures.
Trainers	Must be – non marking. Gymnastics is performed in bare feet.
Shin pads and gum shield	

Index  
page

# PE Uniform expectations

## Part 4B - Optional PE items

PE Zip Top	With school logo ( <b><i>supplier only</i></b> ). Burgundy for Years 7 & 8 and Core PE in Years 9, 10 & 11.  Black for BTEC Sports students in Years 9, 10 & 11.
Black Tracksuit bottoms	Black, plain or very subtly branded bottoms.
Sport leggings	Must be black and sports specific. Must not be fashion leggings.

Index  
page

# Uniform expectations

## Part 5 topcoats

Topcoats ***must be***:

- waterproof

Topcoats ***must not be***:

- any garment deemed inappropriate for school such as: denim jackets, leather studded jackets, jackets with an offensive badge, logos, designs and slogans, hoodies and sweatshirts, non-uniform jumpers, cardigans, large T-shirt etc.

Index  
page

# Uniform expectations

## Part 6 Jewellery

Jewellery ***must be***:

- one pair of stud ear rings.
- a watch.

During some lessons students will be required to take off even permitted jewellery. It is the student's responsibility to look after it.

Jewellery ***must not be***:

- any other item of jewellery such as, but not limited to: rings, necklaces, bracelets, nose stud/rings, tongue studs, lip studs or rings, eyebrow studs or rings.

Index  
page

# Uniform expectations

## Part 7 hairstyles

Hairstyles ***must be***:

- moderate and appropriate for school.

Hairstyles ***must not be***:

- grade 2 or less.
- extreme, bright, bold colours.
- with lines or patterns cut into the hair.

**Index  
page**

# Uniform expectations

## Part 8 nail polish and or acrylic nails

Nails ***must be***:

- free of any polish or acrylic extensions.

Nails ***must not be***:

- painted with any nail polish.
- modified with any type of acrylic nail.

Index  
page



# Uniform expectations

## Part 9 make up

Make up ***must be***:

- Natural and not eye catching.

Make up ***must not be***:

- false eye lashes.
- bright colours or eye catching.

**Index  
page**

# Uniform expectations

## Part 10 piercings

Piercings ***must be***:

- single stud earrings only.

Piercings ***must not be***:

- any other type. For example nose studs or clear studs

Students who decide to have facial piercing carried out during term time will be ***expected to remove*** the stud/ring etc. ***Clear studs will not be permitted***. Plasters covering such items will ***not be permitted as an alternative***. Students who ***do not follow these rules*** will be ***removed to work with a member of staff until the item is removed***.

Index  
page